



HEADWATERS  
ECONOMICS

[www.headwaterseconomics.org](http://www.headwaterseconomics.org)

# **A Profile of Agriculture in 3 County Study Area**

**Tulare California, Kern California, and Fresno California**

Produced by the  
**Economic Profile System Analyst (EPSA)**

October 10, 2008

---

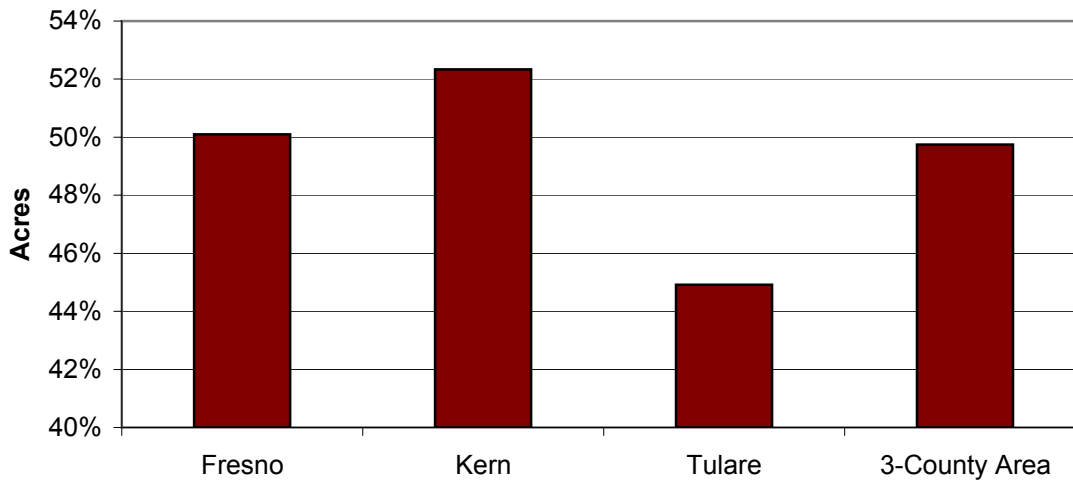
- 3 [Farming Profile](#)
- 4 [Farms by Type](#)
- 5 [Farm Land by Land Use](#)
- 6 [Market Value of Production](#)
- 7 [Production Rankings](#)
- 8 [Livestock & Top Crop Trends](#)
- 9 [Income Trends by County](#)
- 10 [Income Trends](#)
- 11 [Farm Income Trends](#)
- 12 [Farm Income & Expenses Trends](#)
- 13 [Production Expenses](#)
- 14 [Ag's Share of the Economy](#)
- 15 [Farm Ownership](#)
- 16 [Farm Size](#)

This page describes the basic agricultural profile of the region in terms of the kinds of farms, dominant farming land uses, and key commodities from a market standpoint.

**Farming Profile**

	Number Farms	Land in Farms (acres)	Average Farm Size	Total County Acreage	Percent of County in Farms
Fresno	6,281	1,928,865	307	3,849,810	50%
Kern	2,147	2,731,341	1,272	5,218,625	52%
Tulare	5,738	1,393,456	243	3,102,306	45%
3-County Area	14,166	6,053,662	427	12,170,742	50%

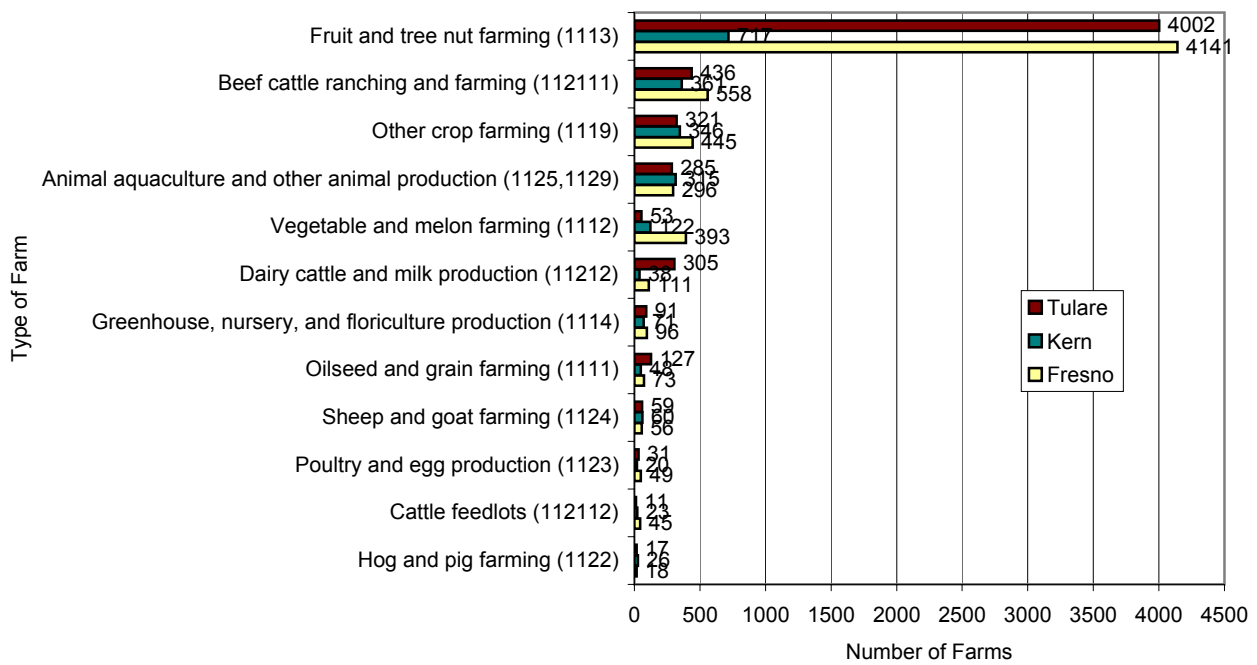
Share of Acreage in Farms



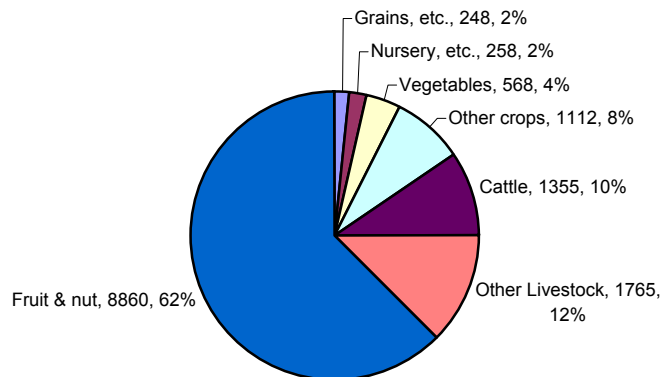
Farms by Type, 2002

- 47 percent of the farmland in the area is pastureland, 48 percent is crops, which is a very high percentage of cropland relatively speaking.
- 62 percent of farms raise fruit or nuts, 22 percent livestock (including beef cattle, dairy cattle, and all other animals), 8 percent other crops (including hay), 4 percent vegetables, 2% grains and oilseeds.
- Fresno, Kern, and Tulare counties rank first, second and third respectively in the state and nation in terms of the market value of fruit and nuts.
- Tulare County ranks first in the state and nation in market value of its dairy products.

Farms by Type, Fresno, Kern and Tulare Counties, 2002



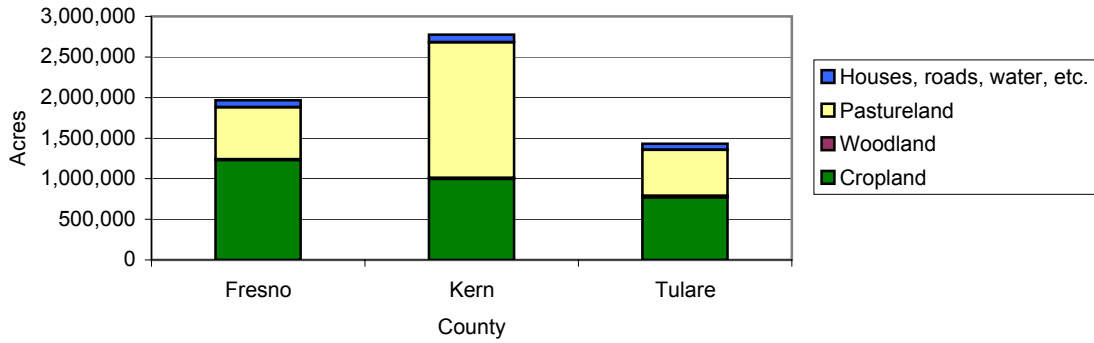
Types of Farm, All Counties, 2002, Simplified Code



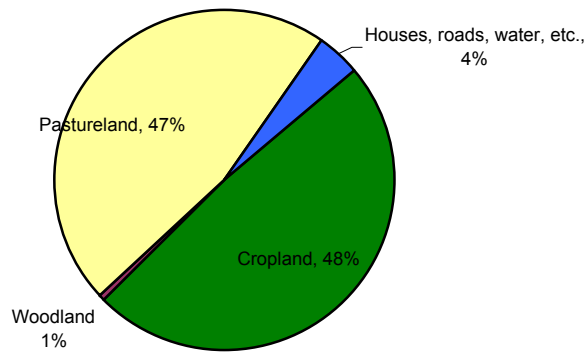
Source: Census of Agriculture

## Farm Land by Land Use

Farm Land by Use, Fresno, Kern, and Tulare Counties, CA, 2002



Farm Land by Use in Region, 2002



Source: Census of Agriculture

### 3 County Study Area

# Market Value of Production

## Total sales by Commodity (\$1,000, 2002)

	Fresno			Kern		
	Value	State Rank	U.S. Rank	Value	State Rank	U.S. Rank
<b>Total Value of Agricultural Products Sold</b>	<b>\$2,150,938</b>	1	1	<b>\$2,058,706</b>	4	4
<b>Crops, including nursery and greenhouse</b>	<b>\$2,150,938</b>	2	2	<b>\$1,783,418</b>	3	3
Fruits, tree nuts, and berries	\$1,147,432	1	1	\$1,081,149	2	2
Vegetables, melons, potatoes, and sweet potatoes	\$649,952	2	2	\$333,134	3	4
Cotton and cottonseed	\$226,655	1	1	\$135,224	3	3
Nursery, greenhouse, floriculture, and sod (see text)	\$28,077	24	103	\$120,607	11	21
Other crops and hay (see text)	\$65,223	3	11	\$83,645	2	6
Grains, oilseeds, dry beans, and dry peas	\$33,592	8	427	\$29,535	10	495
Cut Christmas trees and short-rotation woody crops	\$6	38	1,342	\$125	20	375
<b>Livestock, poultry and their productions</b>	<b>\$608,483</b>	4	9	<b>\$275,288</b>	10	41
Milk and other dairy products from cows	\$209,161	8	12	\$161,688	9	14
Cattle and calves	\$230,545	2	29	\$88,326	5	78
Poultry and eggs	\$159,095	3	22	(D)	(D)	(D)
Other animals and other animal products (see text)	\$1,131	14	105	(D)	(D)	(D)
Sheep, goats, and their products	\$2,427	7	37	\$7,029	2	4
Aquaculture	\$3,115	7	73	\$571	17	247
Horses, ponies, mules, burros, and donkeys	\$1,289	6	87	\$769	13	196
Hogs and pigs	\$1,721	3	753	\$232	11	1,216

	Tulare			3-County Area	
	Value	State Rank	U.S. Rank	Value	Share of total
<b>Total Value of Agricultural Products Sold</b>	<b>\$2,338,577</b>	2	2	<b>\$7,156,704</b>	
<b>Crops, including nursery and greenhouse</b>	<b>\$1,194,237</b>	4	4	<b>\$5,128,593</b>	
Fruits, tree nuts, and berries	\$933,069	3	3	\$3,161,650	44.18%
Vegetables, melons, potatoes, and sweet potatoes	\$22,138	22	95	\$1,005,224	14.05%
Cotton and cottonseed	\$45,454	5	13	\$407,333	5.69%
Nursery, greenhouse, floriculture, and sod (see text)	\$74,501	14	33	\$223,185	3.12%
Other crops and hay (see text)	\$62,458	4	12	\$211,326	2.95%
Grains, oilseeds, dry beans, and dry peas	\$56,576	5	178	\$119,703	1.67%
Cut Christmas trees and short-rotation woody crops	\$42	29	697	\$173	0.00%
<b>Livestock, poultry and their productions</b>	<b>\$1,144,340</b>	1	1	<b>\$2,028,111</b>	
Milk and other dairy products from cows	\$898,122	1	1	\$1,268,971	17.73%
Cattle and calves	\$176,826	3	36	\$495,697	6.93%
Poultry and eggs	\$39,447	8	174	\$198,542	2.77%
Other animals and other animal products (see text)	\$10,268	1	7	\$11,399	0.16%
Sheep, goats, and their products	(D)	(D)	(D)	\$9,456	0.13%
Aquaculture	\$82	33	613	\$3,768	0.05%
Horses, ponies, mules, burros, and donkeys	\$460	22	432	\$2,518	0.04%
Hogs and pigs	(D)	(D)	(D)	\$1,953	0.03%

Source: Census of Agriculture

**County production rankings, by livestock inventory and crop acreage, 2002**

**Fresno**

	Quantity	State Rank	Universe Rank
<b>Livestock (by number)</b>			
Broilers and other meat-type chickens	9,918,936	2 in 50	28 in 2,599
Turkeys	1,053,599	2 in 48	24 in 2,348
Cattle and calves	396,519	4 in 57	6 in 3,059
Sheep and lambs	38,112	6 in 57	25 in 2,867
Layers, 20 weeks and older	(D)	(D)	(D)
<b>Crops (by acre)</b>			
Grapes	232,659	1 in 52	1 in 1,830
All cotton	218,333	1 in 17	5 in 663
All vegetables harvested	199,321	2 in 56	2 in 2,710
Forage -- land used for hay, haylage, grass silage, greenchop	102,165	6 in 57	41 in 3,059
Tomatoes	102,137	1 in 54	1 in 2,209

**Kern**

	Quantity	State Rank	Universe Rank
<b>Livestock (by number)</b>			
Sheep and lambs	121,593	2 in 27	3 in 2,867
Colonies of bees	34,653	2 in 54	2 in 2,392
Layers, 20 weeks and older	(D)	7 in 56	(D)
Cattles and calves	260,040	8 in 57	19 in 3,059
Horses and ponies	4,241	10 in 57	89 in 3,065
<b>Crops (by acre)</b>			
Almonds	112,492	1 in 41	1 in 72
Grapes	96,510	2 in 52	2 in 1,830
All cotton	138,596	3 in 17	14 in 663
Forage -- land used for hay, haylage, grass silage, greenchop	133,655	4 in 57	20 in 3,059
All vegetables harvested	71,672	5 in 56	6 in 2,710

**Tulare**

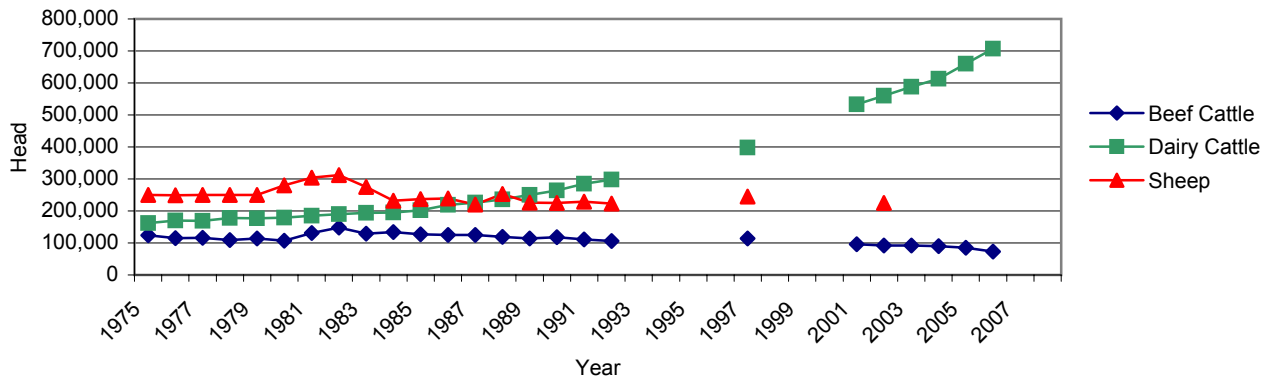
	Quantity	State Rank	Universe Rank
<b>Livestock (by number)</b>			
Cattle and Calves	900,124	1 in 58	1 in 3,059
Hogs and pigs	6,341	1 in 54	(D)
Sheep and lambs	64,913	3 in 57	9 in 2,867
Broilers and other meat-type chickens	2,057,193	4 in 50	189 in 2,599
Turkeys	238,136	7 in 48	98 in 2,328
<b>Crops (by acre)</b>			
Corn for silage	116,752	1 in 33	1 in 2,307
Oranges	111,599	1 in 42	1 in 123
Forage -- land used for hay, haylage, grass silage, greenchop	168,110	2 in 57	7 in 3,059
All cotton	58,946	4 in 17	57 in 663
Grapes	63,379	5 in 52	5 in 1,830

Source: Census of Agriculture

**Inventories, 3-County Area, top livestock and crop items. 1970-2008**

- 3-county area home to the nation's top 3 ranking counties in terms of volume of inventory and production the following sectors: cattle and calves, almonds, grapes, corn for silage, all vegetables, sheep and lambs, colonies of bees, all vegetables, oranges, and tomatoes.
- The 3-county area ranks among the top 5 for counties in California in terms of volume of inventory and production the following sectors: cattle and calves, almonds, grapes, corn for silage, all vegetables, sheep and lambs, colonies of bees, all vegetables, oranges, and tomatoes.
- The area has witnessed a major increase in the volume of cattle and calves since the early 1990s.

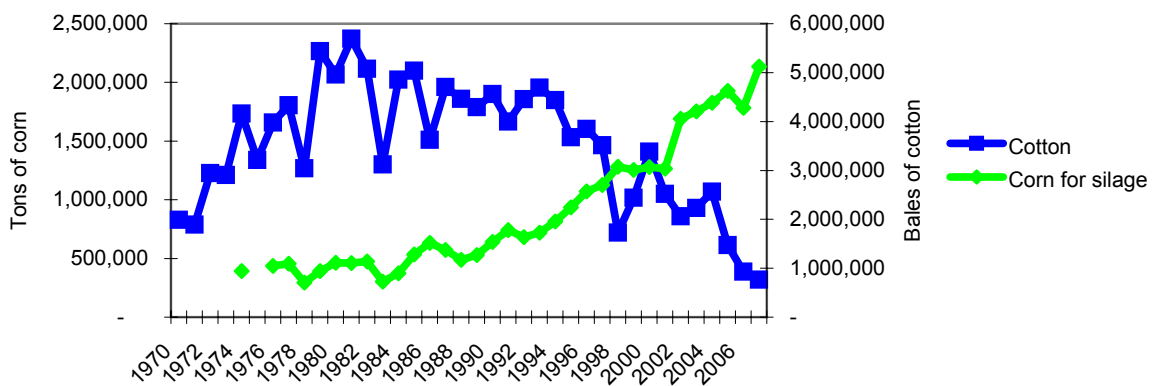
Livestock Inventory (Beef Cattle, Dairy Cattle, Sheep), 3 County-Area, 1970-2008



**Production volumes, top crops**

- The area has witnessed a significant increase in production in volume of corn for silage since the early 1990s.
- The volume of bales of cotton produced has decreased significantly since 1992.

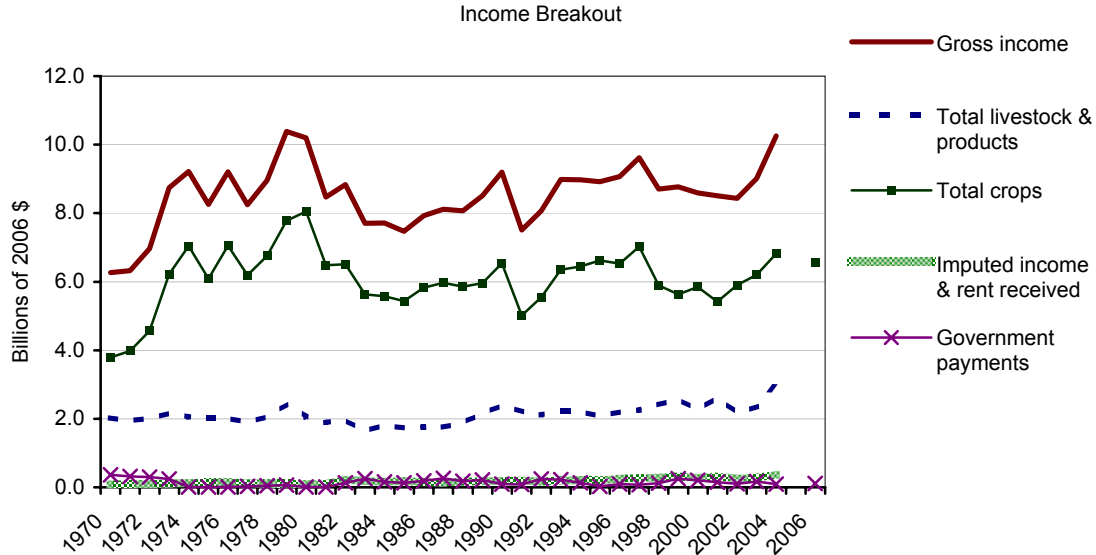
Production of Corn and Cotton, 3-County Area, 1970-2007



Source: Census of Agriculture



## Trends in Income from Crops (From REIS)



## Farm Income (Business Income) in 2006

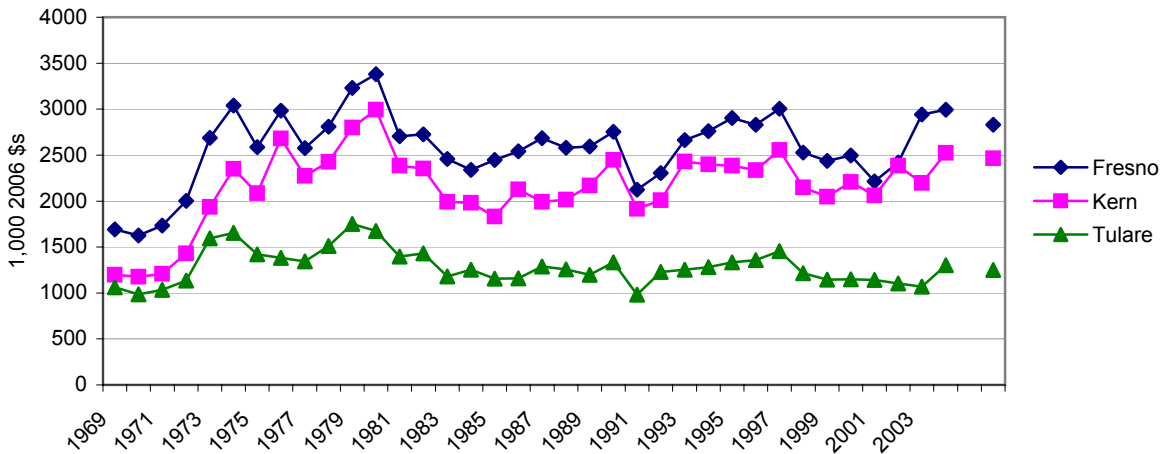
All figures in thousands of 2006 dollars	Fresno County, California	Kern County, California	Tulare County, California	California	United States
Gross Income (Cash + Other)	3,864,865	3,018,389	2,701,091	32,424,348	279,103,488
Cash Receipts from Marketings	3,669,647	2,910,939	2,483,386	30,694,332	246,666,256
Livestock & Products	837,850	447,864	1,232,609	7,888,914	129,571,616
Crops	2,831,797	2,463,075	1,250,777	22,805,416	117,094,648
Other Income	195,218	107,450	217,705	1,730,017	32,437,244
Government Payments	45,765	38,368	30,298	345,731	14,609,890
Imputed Rent & Rent Received	149,453	69,082	187,407	1,384,286	17,827,352
Production Expenses	3,610,076	2,520,923	2,335,344	28,968,504	244,978,160
Realized Net Income (Income - Expenses)	254,789	497,466	365,747	3,455,844	34,125,344
Value of Inventory Change	1,668	(182)	8,919	(12,759)	(1,130,964)
Total Net Income (Inc. corporate farms)	256,457	497,284	374,666	3,443,085	32,994,382

All figures in thousands of 2006 dollars

Gross Income (Cash + Other)					
Cash Receipts from Marketings	94.9%	96.4%	91.9%	94.7%	88.4%
Livestock & Products	21.7%	14.8%	45.6%	24.3%	46.4%
Crops	73.3%	81.6%	46.3%	70.3%	42.0%
Other Income	5.1%	3.6%	8.1%	5.3%	11.6%
Government Payments	1.2%	1.3%	1.1%	1.1%	5.2%
Imputed Rent & Rent Received	3.9%	2.3%	6.9%	4.3%	6.4%
Value of Inventory Change	0.0%	0.0%	0.3%	0.0%	-0.4%

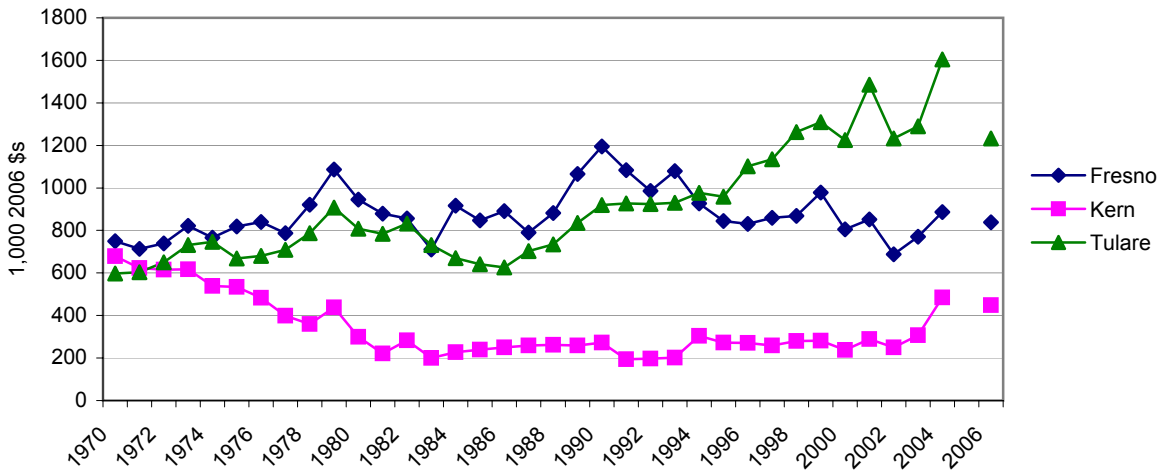
**Trends in Income from Crops**

Income from Crops, Fresno, Kern and Tulare Counties, California, 1970-2006



**Trends in Income from Livestock**

Income from Livestock, Fresno, Kern and Tulare Counties, California, 1970-2006



Source: Census of Agriculture

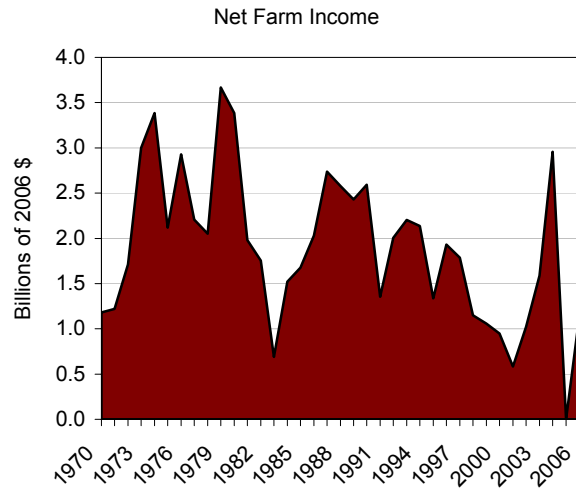
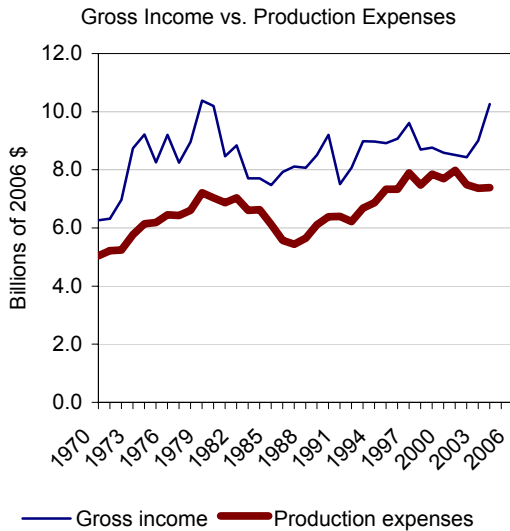
## Highlights

- The 3-county area is unique in the nation in the continuity of gross income exceeding production. Farmers are making money here, more than in the rest of the country.
- Volatility in net income is strongly influenced by income from crops.
- Steady, but incremental, increases in expenses in all categories accounts for a general increase in the costs of production, rather than any single line item changing the overall total dramatically.
- A significant recent increase in gross income is visible in the charts for all three counties from 2004. This should be related to information on top commodities on previous pages for more detail.

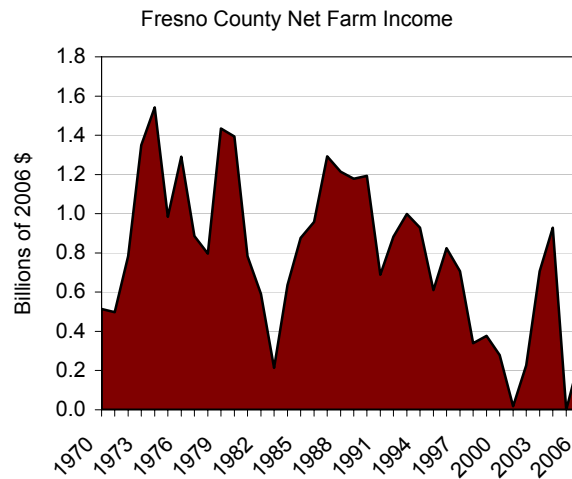
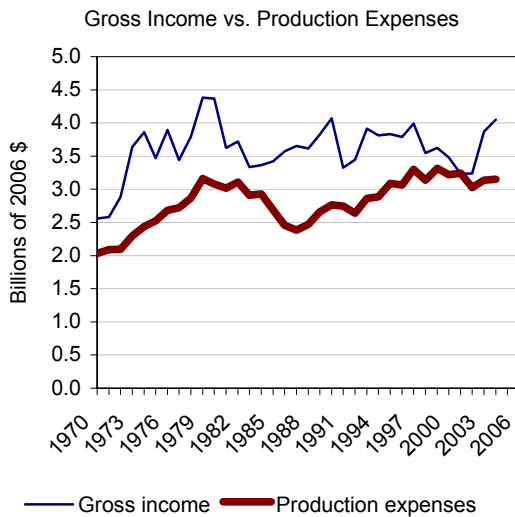
## Gross Income vs. Production Expenses

## Net Farm Income

### Three County Area



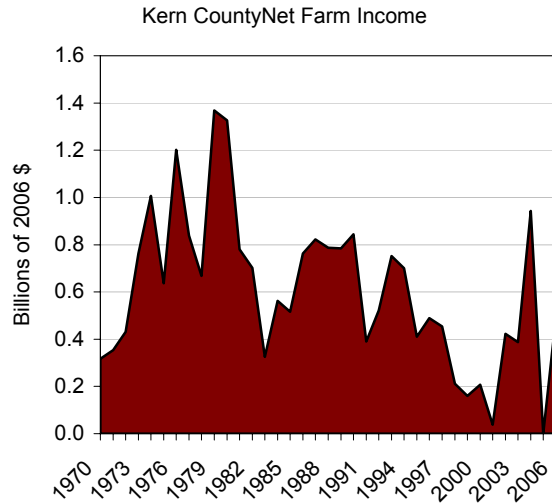
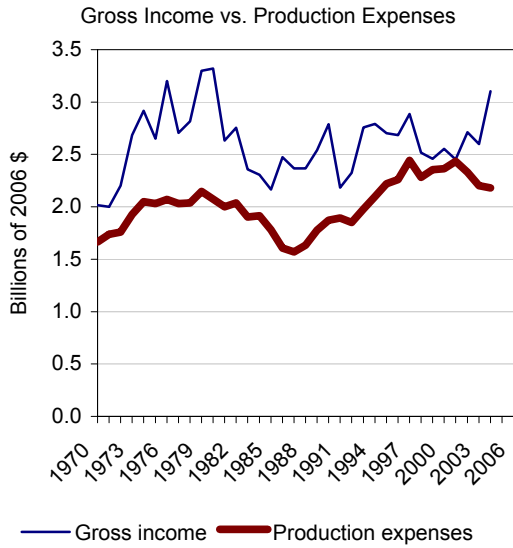
### Fresno County



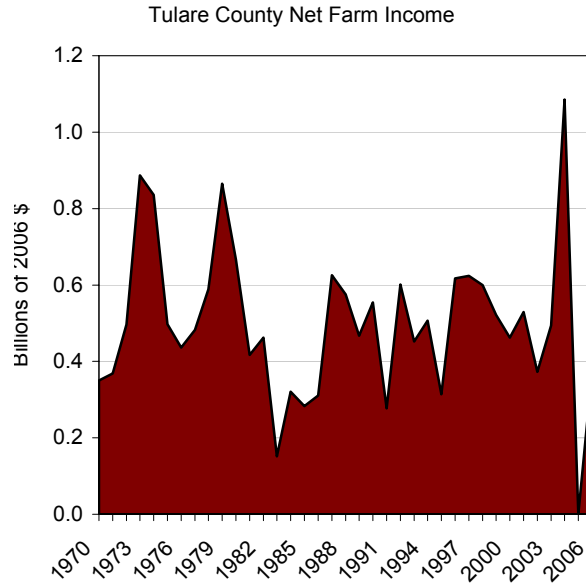
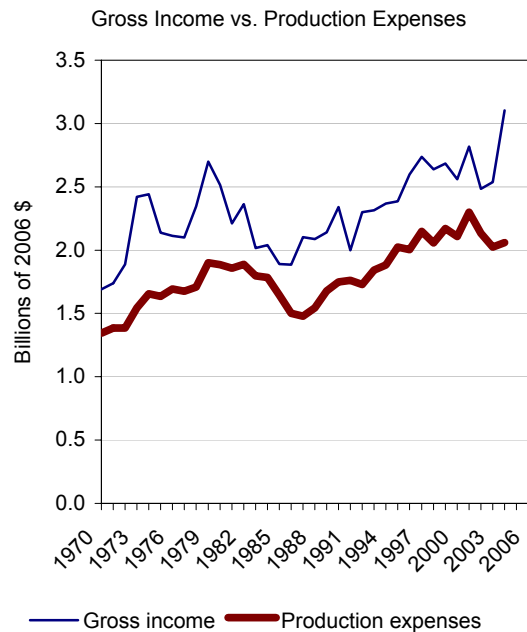
## Gross Income vs. Production Expenses

## Net Farm Income

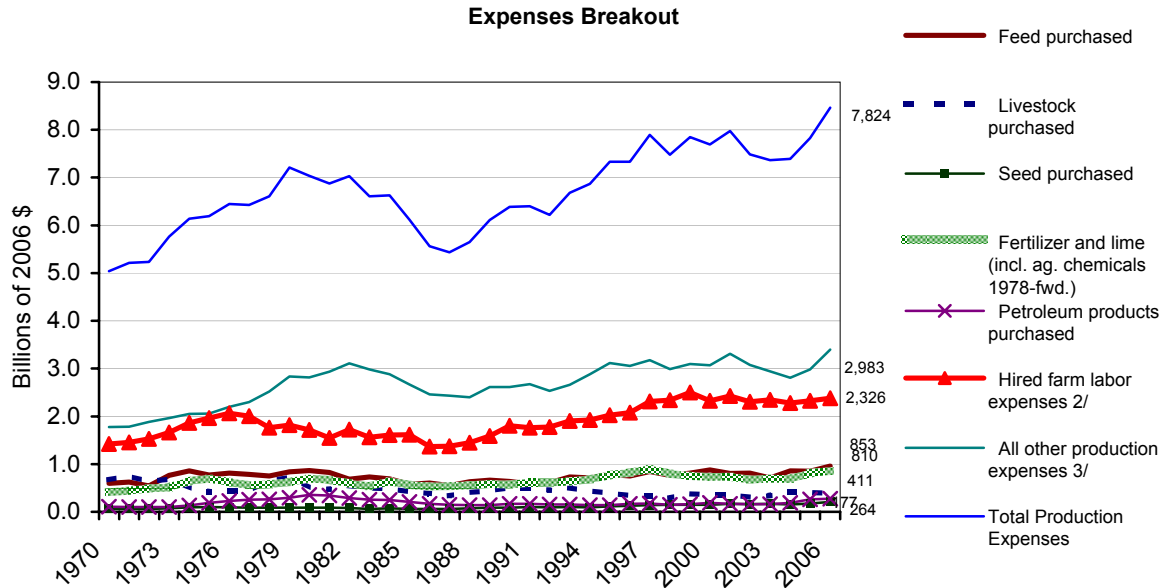
### Kern County



### Tulare County



## Breakout of production expenses



## Expenses in 2006

All figures in thousands of 2006 dollars	Fresno County, California	Kern County, California	Tulare County, California	California	United States
<b>Production Expenses (Percent of Production Expenses)</b>					
Feed purchased	12.1%	3.2%	18.8%	11.5%	12.5%
Livestock purchased	6.7%	2.4%	3.6%	3.4%	11.8%
Seed purchased	2.5%	3.4%	1.3%	4.2%	4.5%
Fertilizer and lime (incl. ag. chemicals 1978-fwd.)	11.0%	11.1%	7.8%	8.4%	9.0%
Petroleum products purchased	3.6%	3.2%	2.8%	3.4%	4.6%
Hired farm labor expenses 2/	26.9%	32.2%	25.5%	29.6%	11.8%
All other production expenses 3/	37.1%	44.4%	40.2%	39.5%	45.8%
<b>Production expenses (2006 Dollars)</b>					
Feed purchased	436,496	79,748	439,690	3,328,561	30,573,122
Livestock purchased	243,482	61,065	83,608	978,385	29,000,922
Seed purchased	91,734	86,082	31,435	1,219,171	11,020,575
Fertilizer and lime (incl. ag. chemicals 1978-fwd.)	397,544	280,554	182,529	2,420,673	22,150,420
Petroleum products purchased	130,919	81,603	64,328	991,282	11,151,230
Hired farm labor expenses 2/	971,027	811,415	595,816	8,582,195	28,979,470
All other production expenses 3/	1,338,874	1,120,456	937,938	11,448,237	112,102,416

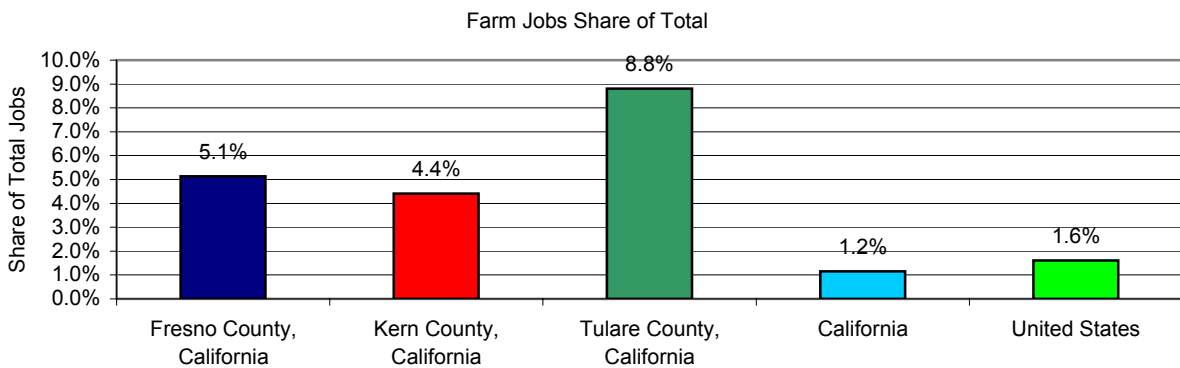
From REIS 2006

## Agriculture's Share of the Economy (2006)

This page assesses the role of agriculture in the overall county and regional economy two different ways, first as a share of total jobs and then as a share of total personal income.

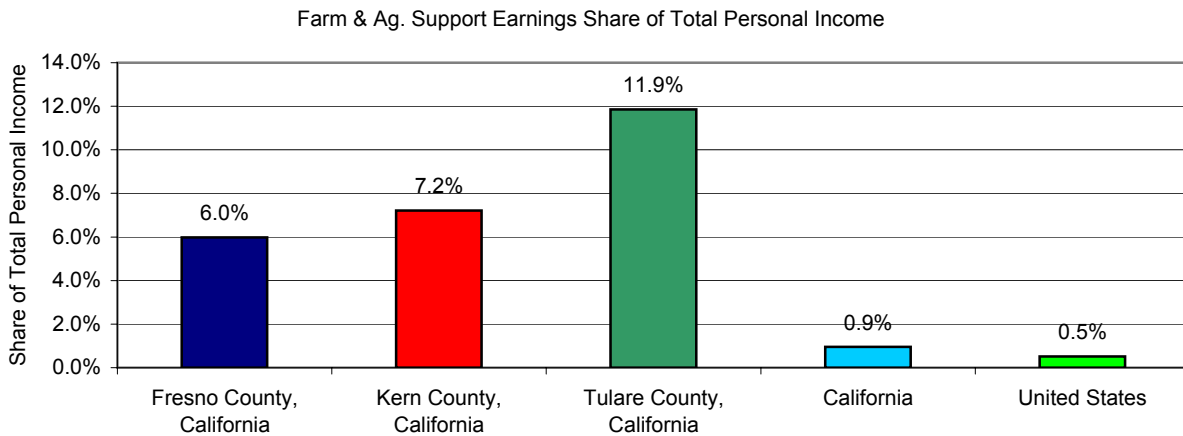
### Employment

	Fresno County, California	Kern County, California	Tulare County, California	California	United States
Farm employment	22,661	15,613	16,740	237,799	2,868,000
Share of Total Jobs	5.1%	4.4%	8.8%	1.2%	1.6%



### Income

	Fresno County, California	Kern County, California	Tulare County, California	California	United States
Farm earnings	642,025	768,875	587,056	7,633,563	38,980,000
Share of Total Personal Income	2.7%	3.8%	5.9%	0.5%	0.4%
Agriculture and forestry support activities	792,951	676,771	597,620	5,989,791	17,119,000
Farm & Ag. Services	1,434,976	1,445,646	1,184,676	13,623,354	56,099,000
Share of Total Personal Income	6.0%	7.2%	11.9%	0.9%	0.5%

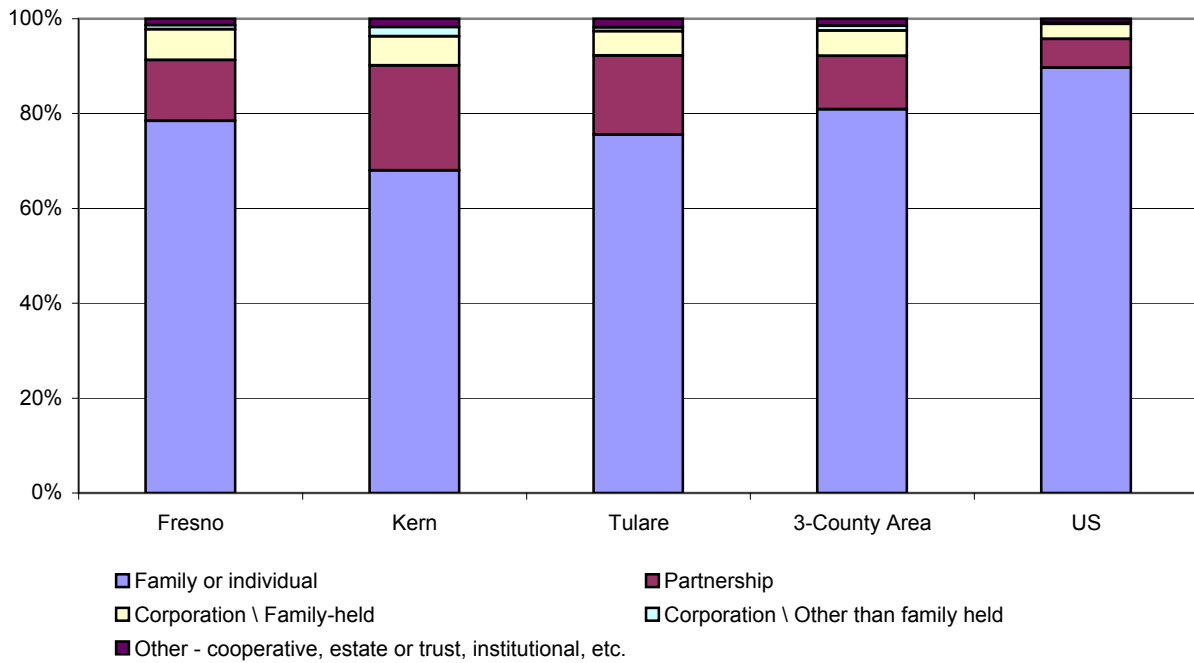


**Tenure and Operator Characteristics 2002**

This page describes social characteristics of farm operators and characteristics of the farm business, comparing them to state and national figures. It also breaks down the area's farms into size cohorts.

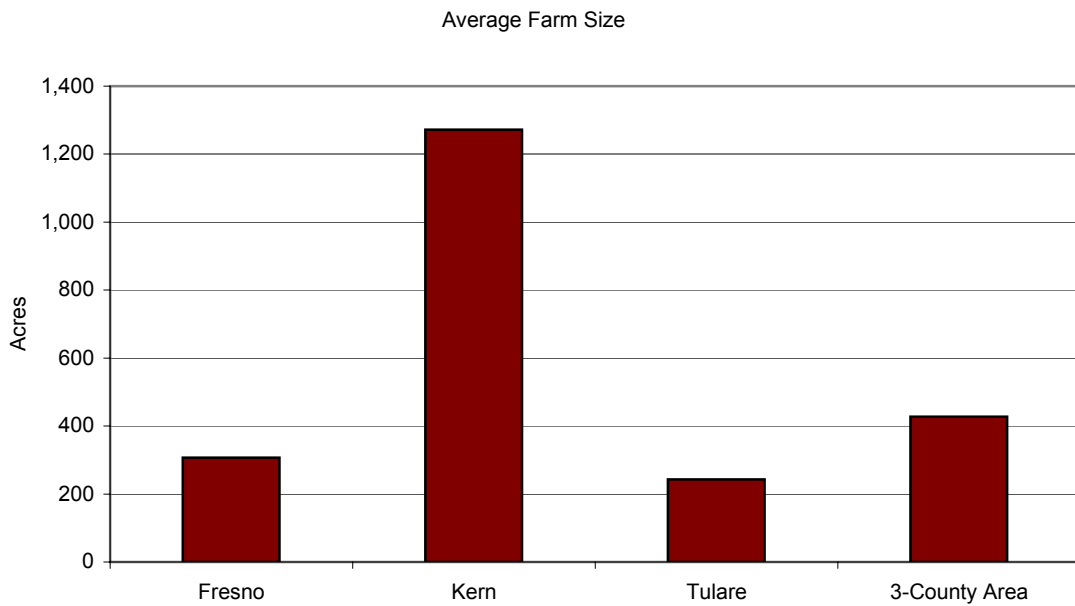
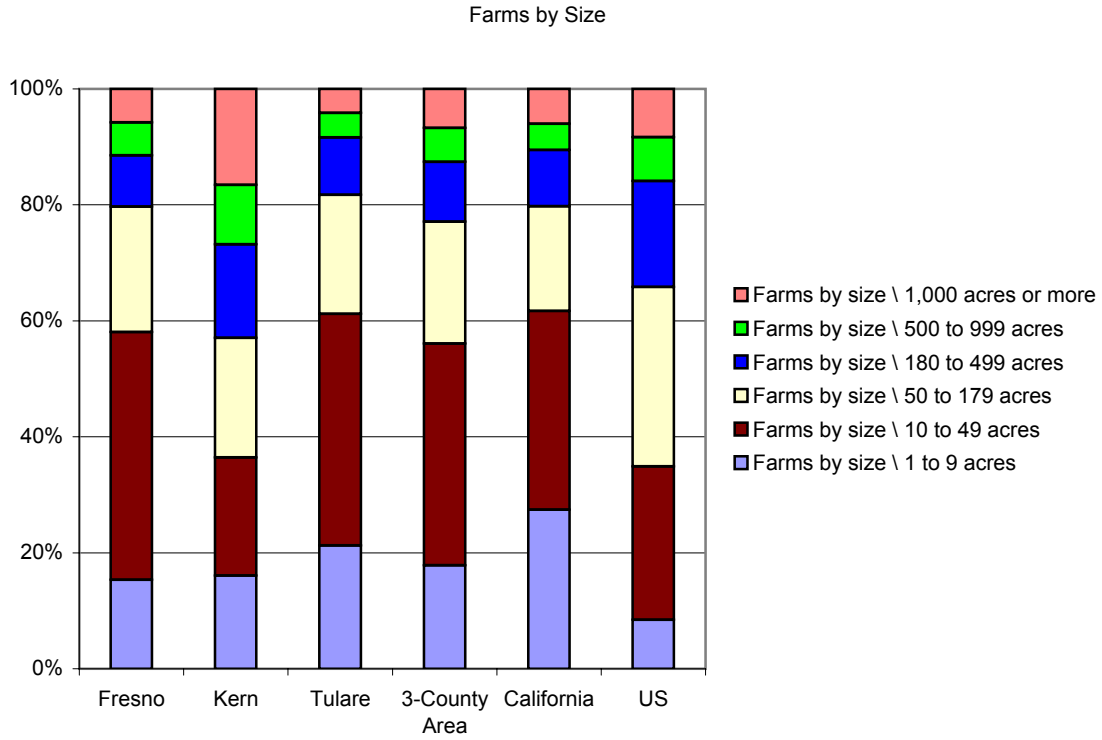
	Fresno	Kern	Tulare	3-County Region	California	U.S.
Total Number of Operators	9,606	3,648	8,672	21,926		
Number of Farms	6,281	2,147	5,738	14,166		
Percent of Operators Reporting Farming as Primary Occupation	69.4%	70.0%	66.4%	68.6%	61.6%	57.5%
Percent of Operators Living on Farm	70.5%	57.2%	65.3%	63.8%	72.5%	78.9%
Average Years on Farm, Principal Operator	20.3	18.5	19.6	19.5	18.4	20.7
Average Age, Principal Operator	56.7	56	57.5		56.8	55.3

Breakout of Ownership by Type



Source: Census of Agriculture

**How many farms are large? How many are small?**



Source: Census of Agriculture