

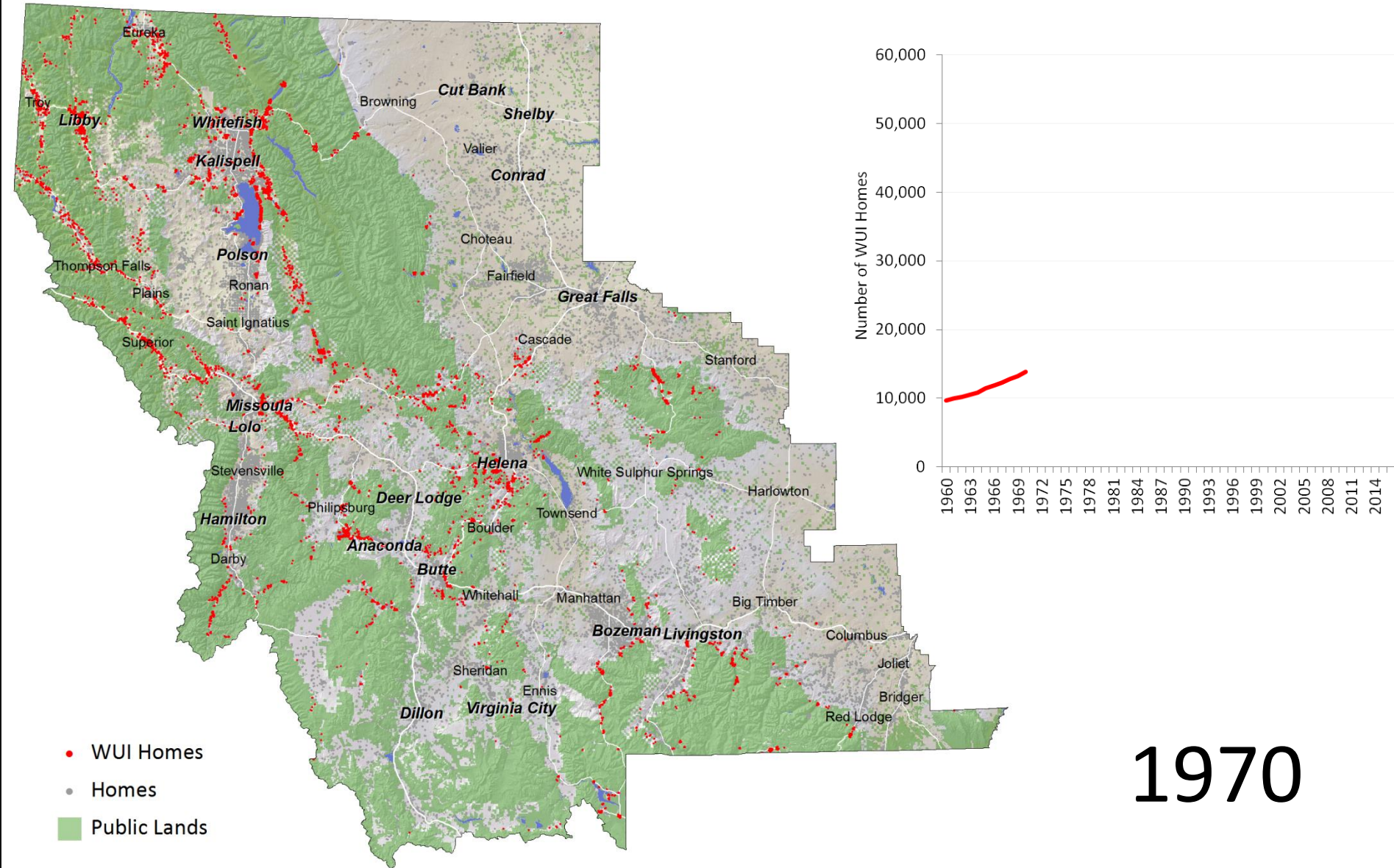
Climate Change Resources:

A Case Study of Homes in Western Montana's Wildland Urban Interface

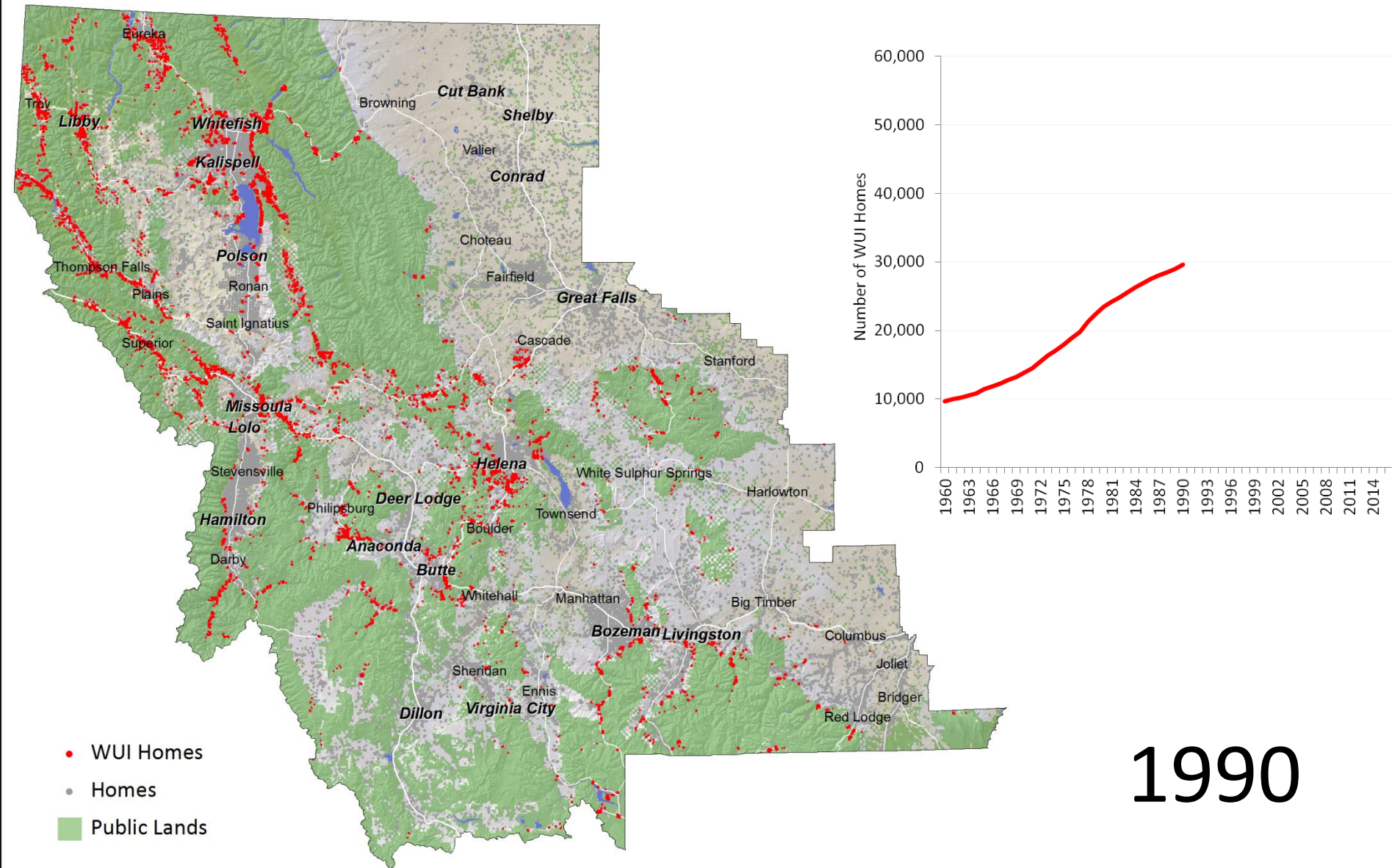


Patty Gude
patty@headwaterseconomics.org

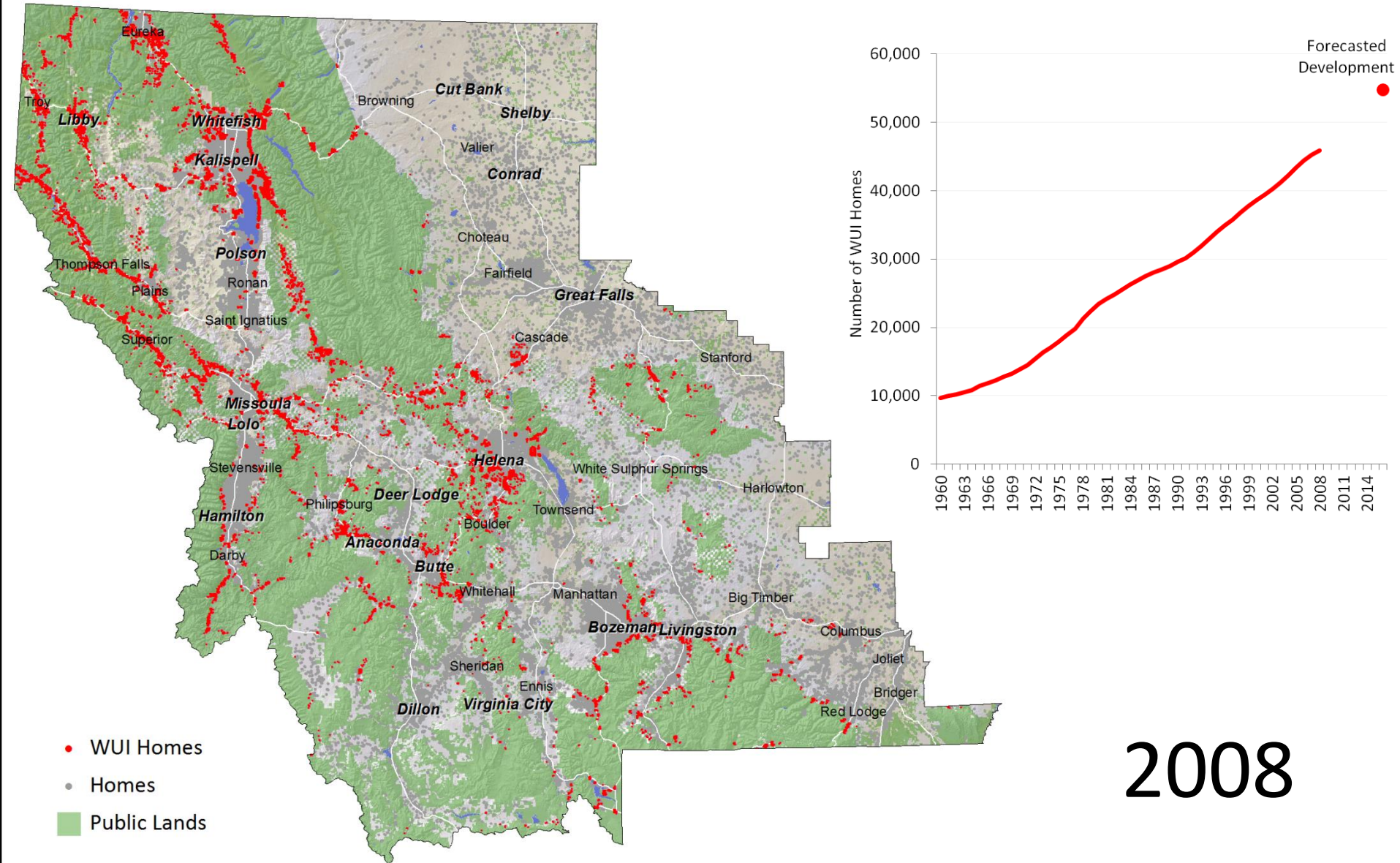
Homes in Montana's Wildland Urban Interface



Homes in Montana's Wildland Urban Interface



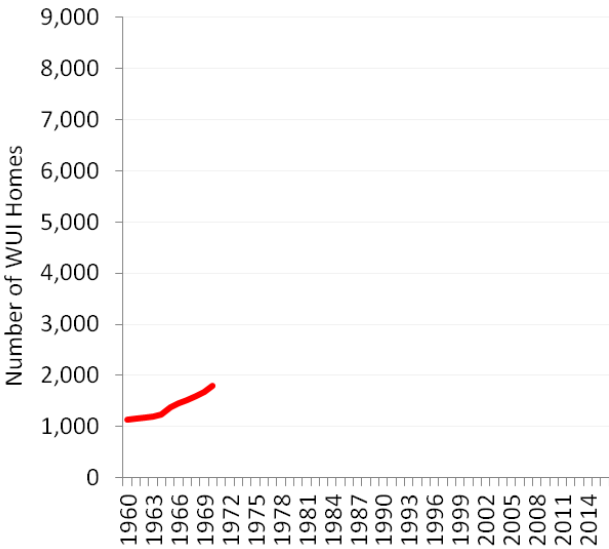
Homes in Montana's Wildland Urban Interface



2008

Homes in Missoula County's Wildland Urban Interface

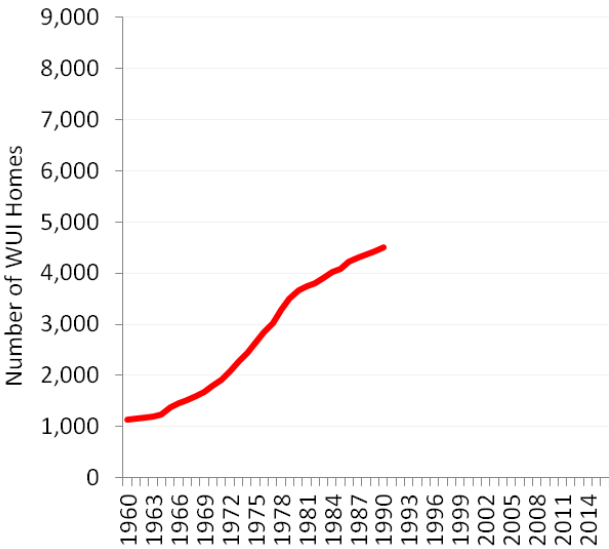
- WUI Homes
- Homes
- Public Lands



1970

Homes in Missoula County's Wildland Urban Interface

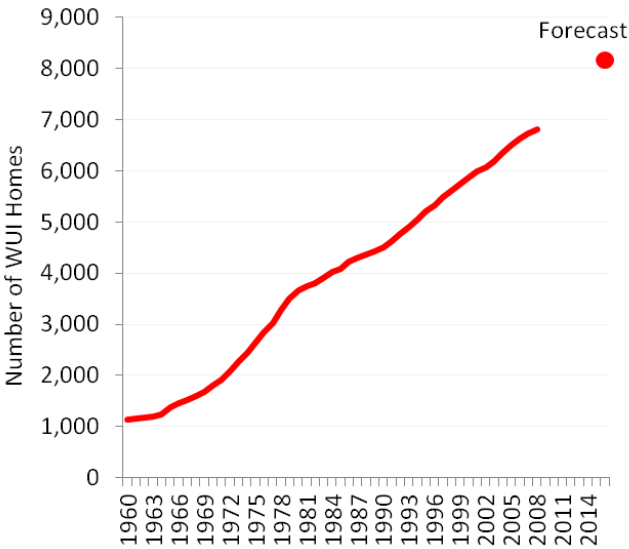
- WUI Homes
- Homes
- Public Lands



1990

Homes in Missoula County's Wildland Urban Interface

- WUI Homes
- Homes
- Public Lands



2008

Find Research By Region and Topic

Select a Region

Show All Regions ▼

Select a Topic

All Topics ▼

SUBMIT

► Browse All Research

You Are Here: [Home](#) ► [Land](#) ► [Reports](#) ► [Preparing Missoula County for a Changing Climate](#)

Preparing Missoula County for a Changing Climate



Climate change is a real and **growing concern** for Missoula County. To learn more and involve the community, Headwaters Economics—in cooperation with the Clark Fork Coalition and the Geos Institute—recently convened a Climatewise Workshop.

At the workshop, local experts and residents learned about the latest climate science and potential risks for Missoula County, and applied their local knowledge and experience to identify strategies to prepare for possible changes.



Socioeconomic Profiles

Use EPS-HDT to compare your region to the rest of the country. Includes socioeconomic data pulled from several sources.

What We're Reading

[USDA Center for Rural Development](#)

[University of Wyoming: Publicly Funded Conservation Program Creates Private Sector Jobs](#)

[Shaping Climate-Resilient Development \(pdf link\)](#)

[NOAA Report on Climate Change, Increasing Volatility](#)

Report and Five Action Plans

- **Primer Report** on Climate Change ad Missoula County
- **Local Impacts** from Climate Change in Missoula County
- **Wildfire Severity** Tied to Growth in the Wildland-Urban Interface
- **Increased Flooding** and Declines in Water Quality
- **Declining Snowpack** and De-Watering of Rivers
- **Fish and Wildlife** Disruptions and Declines

Interactive Web Resources

Four **interactive graphics** let you explore the main economic, social, and environmental threats to Missoula County, and the strategies suggested at the workshop to confront these threats.

Related Research

[Missoula County ClimateWise Social Threat Map](#)

[Missoula County ClimateWise Environmental Threat Map](#)

[Missoula County ClimateWise Economic Threat Map](#)

[Missoula County ClimateWise Strategy Map](#)

[Crown of the Continent and Climate Change](#)

View other climate change resources at
<http://headwaterseconomics.org/doc/climage-change>