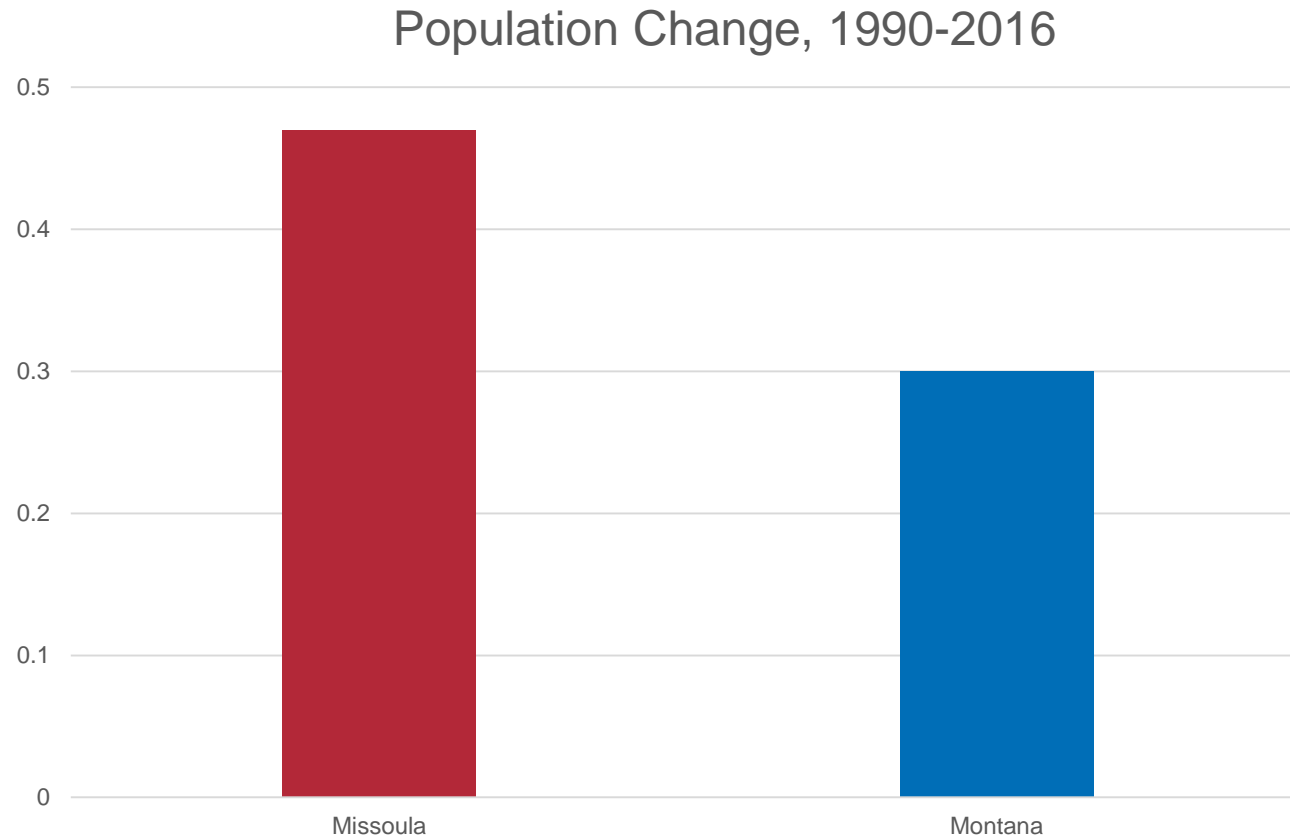


# Missoula County Growth Trends

---



# Missoula County Is Growing Rapidly



**From 1990 to 2016, Missoula County's population grew by 47%, from 79,080 to 116,130 residents.**

**Montana's population grew by 30% during the same period.**

Source: U.S. Department of Commerce. 2017. Bureau of Economic Analysis, Regional Economic Accounts, Washington, D.C., reported by Headwaters Economics' Economic Profile System, <https://headwaterseconomics.org/eps>

# Missoula County Is Losing Open Space



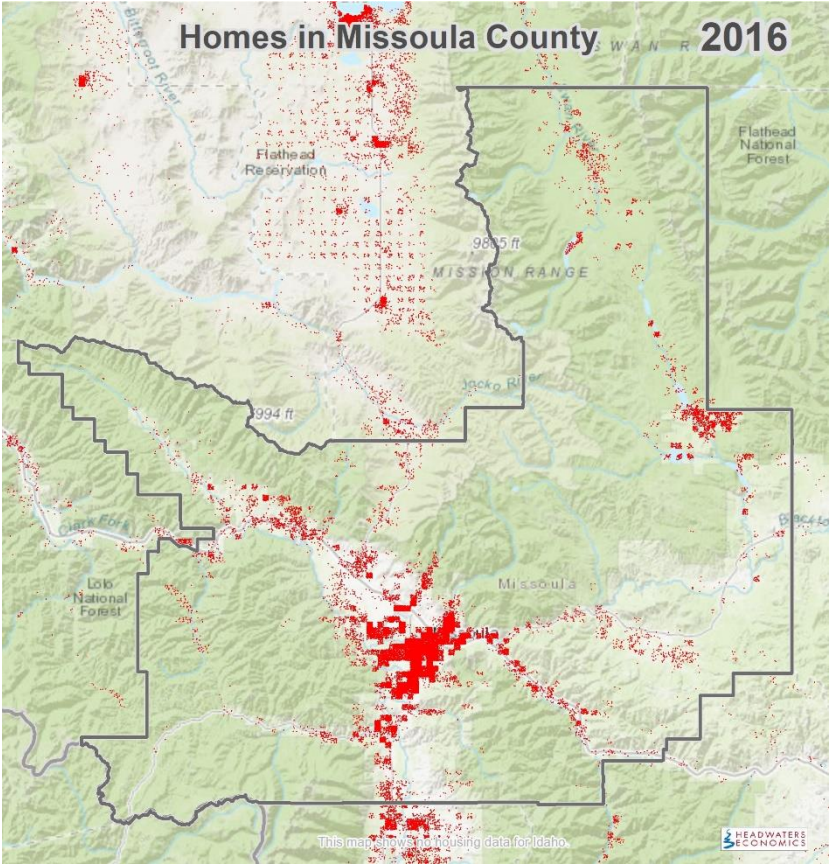
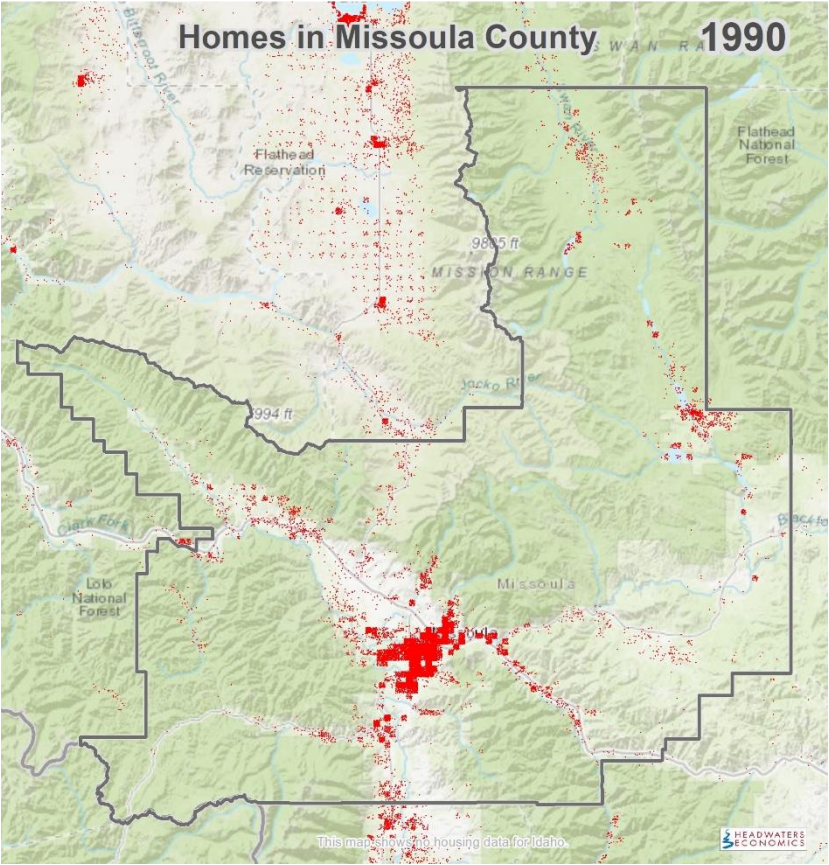
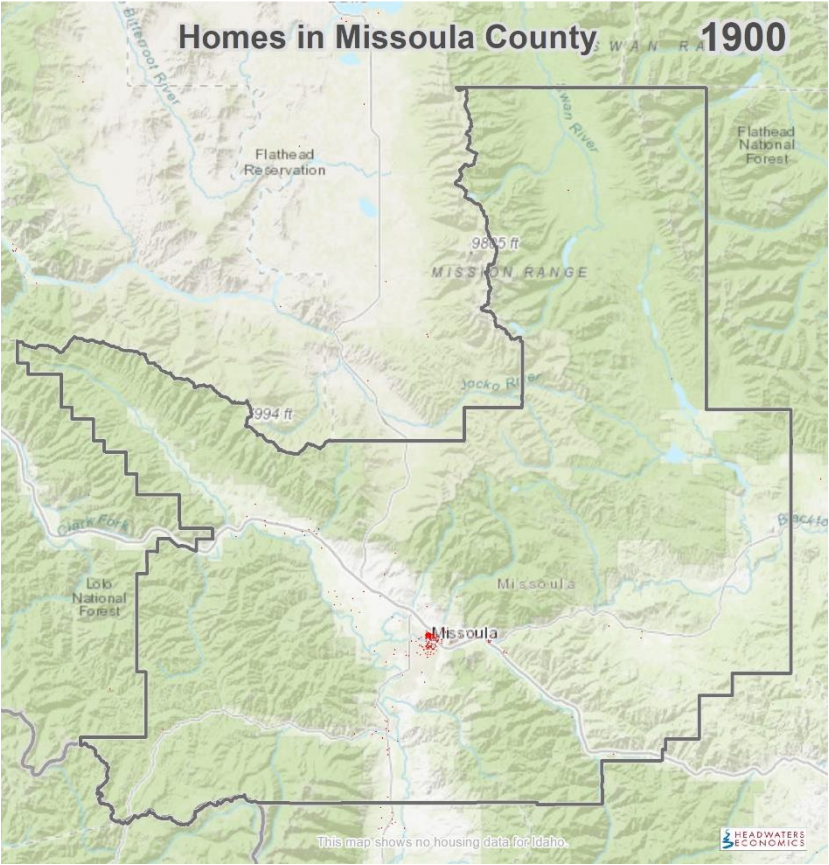
Photo: kenterphotography.com

From 1990 to 2016:

- 32,320 acres (50 square miles) were converted from open space to residential development.
- One in ten new Montana homes was built in Missoula county.
- Of these new homes, 30% were built in large lot areas (>10 acres).

Source: Montana Department of Revenue, Property Assessment Division, 2017, reported by Headwaters Economics, <https://headwaterseconomics.org/economic-development/local-studies/montana-home-construction/>.

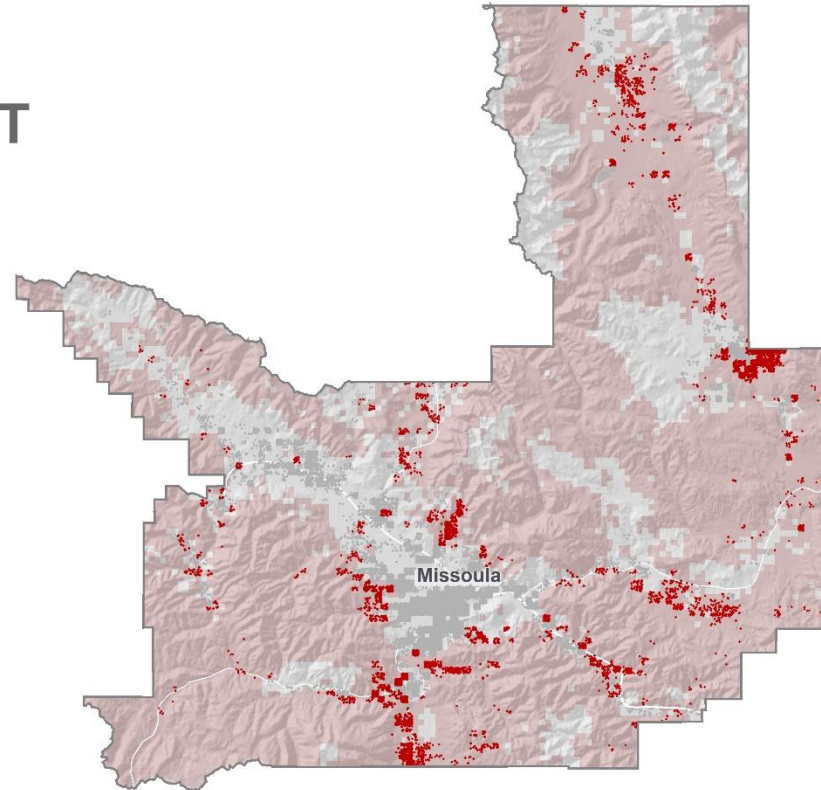




# Missoula County Is Growing into Areas of High Wildfire Hazard

## Missoula County, MT

- High wildfire hazard
- **4,571** homes in high wildfire hazard areas



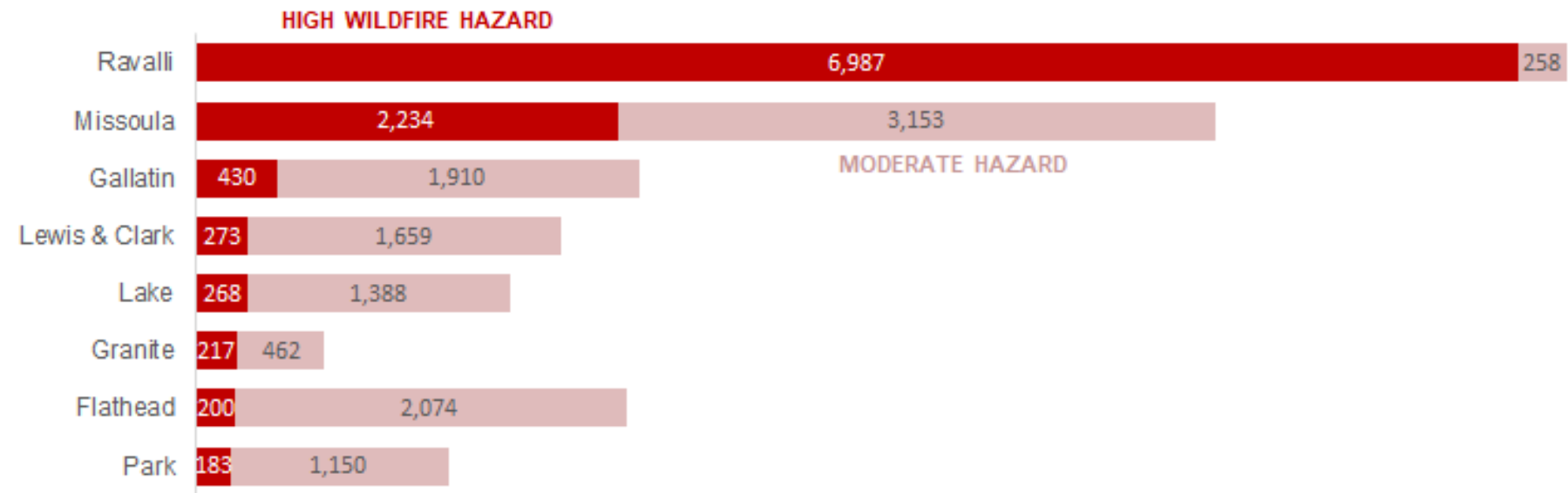
Half of all new homes constructed in Missoula County from 1990 to 2016 were in areas of high or moderate wildfire hazard.

Housing growth is faster in areas of high and moderate wildfire hazard than in areas of low hazard.

Source: Housing data from Montana Department of Revenue, Property Assessment Division, 2017. Wildfire hazard data from Pyrologix, 2018. Reported by Headwaters Economics, <https://headwaterseconomics.org/wildfire/homes-risk/new-montana-homes-increase-wildfire-risks/>

# Missoula County Ranks 2<sup>nd</sup> for Homes in High Wildfire Hazard Areas

## Counties with the Most Homes Built in Wildfire Hazard Areas, 1990 to 2016



Housing data: MT Dept. of Revenue; Wildfire data: Pyrologix



Source: Housing data from Montana Department of Revenue, Property Assessment Division, 2017. Wildfire hazard data from Pyrologix, 2018. Reported by Headwaters Economics, <https://headwaterseconomics.org/wildfire/homes-risk/new-montana-homes-increase-wildfire-risks/>



Contact:  
Chris Mehl  
[chris@headwaterseconomics.org](mailto:chris@headwaterseconomics.org)  
406-581-4992