

HEADWATERS ECONOMICS RESEARCH UPDATE

July 2011

<http://headwaterseconomics.org>



HEADWATERS
ECONOMICS

Getting the Economics Right

Getting the economics right is important. The future of our communities and their ability to compete in a modern economy depends on it.

Headwaters Economics has significantly enhanced automated socioeconomic profile software to help users easily retrieve more information, understand their communities, and make better decisions for almost any geography in the country.

The software, EPS-HDT (Economic Profile System-Human Dimensions Toolkit), was created jointly by Headwaters Economics, the Bureau of Land Management, and the U.S. Forest Service.

EPS-HDT remains free and user-friendly and now includes 14 detailed reports on specific economic sectors such as mining, non-labor income, and the importance of natural amenities.

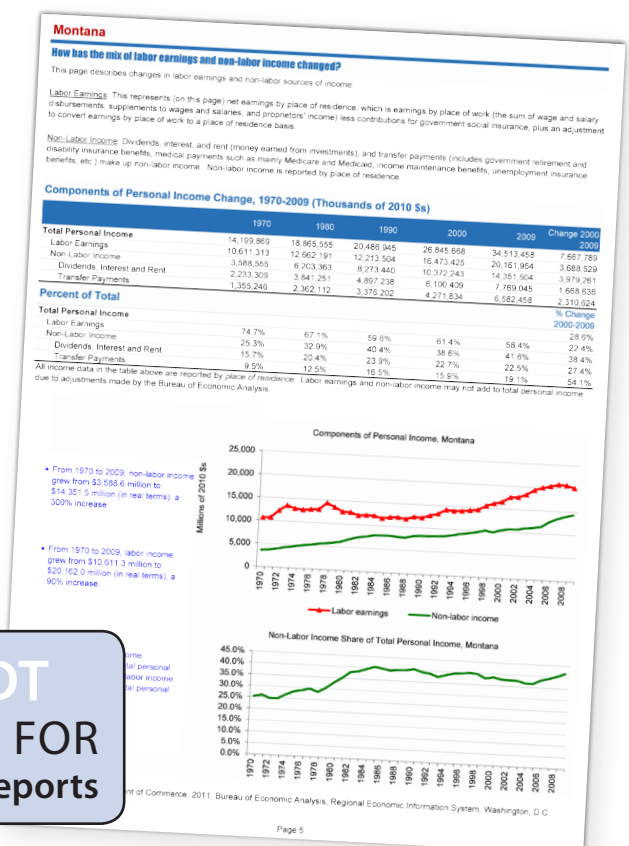
Designed for a wide variety of users—public lands managers, county planners, economic development directors, county commissioners, businesses, and others—EPS-HDT saves time by automating the process of gathering and analyzing more than 2,000 variables (population, jobs, income, age, education,

housing affordability, etc.). It takes the work out of making calculations, tables, and figures, and provides interpretive text to better understand local economies.

Any person with a computer and Excel can use EPS-HDT, which is updated annually using published statistics from federal sources, including the Bureau of Economic Analysis, Bureau of the Census, Bureau of Labor Statistics, and others.

**Any person with
a computer and
Excel can use
EPS-HDT**

EPS-HDT
SEE INSIDE FOR
14 Detailed Reports



<http://headwaterseconomics.org/tools/eps-hdt>

Why Use EPS-HDT?

By providing reliable and credible information in an easy-to-understand package, EPS-HDT offers valuable insights for both experts and non-specialists. The program can help elected officials or land managers better understand the baseline conditions in their community or region, research the long-term trends of a specific sector such as timber, or identify the share of retirement and investment income in a county or region.

What's In Each Report?

Each EPS-HDT report provides detailed data, tables, charts, and interpretive bulleted information. In addition, each page of EPS-HDT now contains a

Study Guide with color-coded text to describe what is being measured, methods, and additional resources.



EPS-HDT Provides In-Depth Analysis, Compares Geographies

14 different reports can be run for almost any geography, and benchmarked against any other geography in the United States.

✓ Socioeconomic Measures

✓ Summary

✓ Demographics

✓ Agriculture

✓ Mining and Energy

✓ Services

✓ Travel and Tourism

✓ Government

✓ Non-Labor

✓ Timber

✓ Land Use

✓ Amenities

✓ Development and Wildfire

✓ Payments from Federal Lands

COMPREHENSIVE REPORTS

Socioeconomic Measures is the comprehensive report that covers long-term trends in population, employment and personal income, jobs and income by industry, unemployment, wages, and more.

The **Summary** report is a useful “at a glance” report that compares selected geographies by factors such as demographics, economic sectors, and land use.

DEMOGRAPHICS AND ECONOMIC SECTOR REPORTS

The **Demographics** report describes population, age, race and ethnicity, poverty, income distribution, and other factors.

The seven economic sector reports—**Agriculture, Mining and Energy, Services, Travel and Tourism, Government, Non-Labor, Timber**—cover detailed trends in employment, wages, proprietors, retirement and investment income, etc.

THEMATIC REPORTS

The **Land Use** report describes land ownership, management, and land cover; **Amenities** discusses the role public lands may play in attracting and retaining people and businesses.

The **Development and Wildfire** report describes the development of homes in the West adjacent to fire-prone public lands, and **Payments from Federal Lands** shows the payments counties receive from federal lands such as SRS and PILT.

Getting Started

Users can easily download and install EPS-HDT after a one-time only registration. The program, an Excel “Add In”, then resides on the Excel toolbar and can be operated any time Excel is open and there is an internet connection.

EPS-HDT is Easy to Share

EPS-HDT reports first run in Excel and can be easily exported to Word or XML, or saved as a PDF.

Data Center: Access to Raw Data

Just want the raw data? At the Data Center, an EPS-HDT web resource, users can download detailed data used to generate EPS-HDT reports.

<http://datacenter.headwaterseconomics.org/>

“The resources provided by Headwaters Economics are the best we have ever found. We use these resources every day in communities and regions throughout the United States. The recent upgrades and new analysis are great and very helpful.”

— DON MACKE, CENTER FOR RURAL
ENTREPRENEURSHIP



“I was really amazed at how simple it was to download and use, especially given the power of the tool. The reports are slick, easy to understand and provide field specialists an invaluable tool to use in their planning processes.”

—JAN PETERSON, BLM

ALSO AT HEADWATERS ECONOMICS

<http://headwaterseconomics.org>

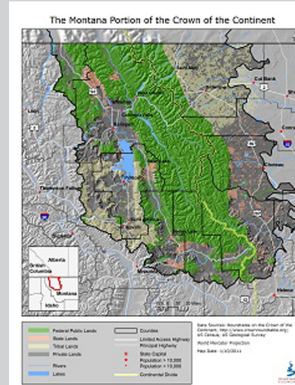
Fossil Fuel Extraction and Western Economies

This new **study** compares the importance of fossil fuels in the five Rocky Mountain energy-producing states (CO, MT, NM, UT, and WY) during the recent recession.



Crown of the Continent and Climate Change

This **report** analyzes the possible effects of climate change on two “snow-pack” dependent sectors of the economy—downhill skiing and recreational fishing—and concludes with a number of management recommendations.



Economic Importance of National Parks

Headwaters Economics created an **interactive page** for each National Park Service unit to show how these protected public lands have created jobs in gateway communities.

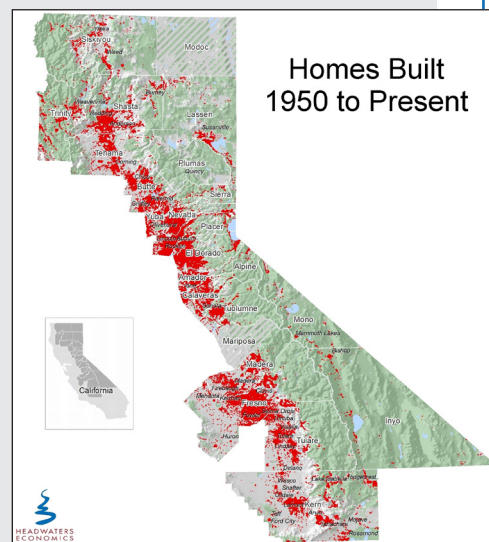


Northern California and Wildfires

Headwaters Economics continues to **study** the impact of housing and climate on the costs of fighting forest fires, most recently in the twelve national forests of the Sierra Nevada.

Preliminary findings in the region include:

- Accounting for precipitation, a 1° F increase in average summer temperature is associated with a 35 percent increase in acres burned.
- For the average U.S. Forest Service wildfire, 32 percent of total firefighting costs are associated with protecting homes.
- The number of homes threatened by wildfires during the past decade roughly doubled compared to the 1980s or 1990s.
- Additional firefighting costs associated with new homes depend on how many homes already are present. For an average USFS wildfire, if only one home is within six miles of a fire the additional cost of a new home is roughly \$57,000 daily—or \$2 million for the duration.



MISSION STATEMENT

Headwaters Economics is an independent, non-profit research group. Our mission is to improve community development and land management decisions in the West.

HEADWATERS ECONOMICS

Mail:

P.O. Box 7059, Bozeman MT 59771

Deliveries:

270 W. Kagy, Suite G, Bozeman MT 59715

Staff:

Ray Rasker, Ph.D. 406.570.7044

Ben Alexander 406.599.7423

Patty Gude 406.599.7425

Mark Haggerty 406.570.5626

Josh McCord 406.570.2914

Julia Hobson Haggerty, Ph.D. 406.600.1766

Chris Mehl 406.570.8937

<http://headwaterseconomics.org>

printed on recycled paper



HEADWATERS
ECONOMICS