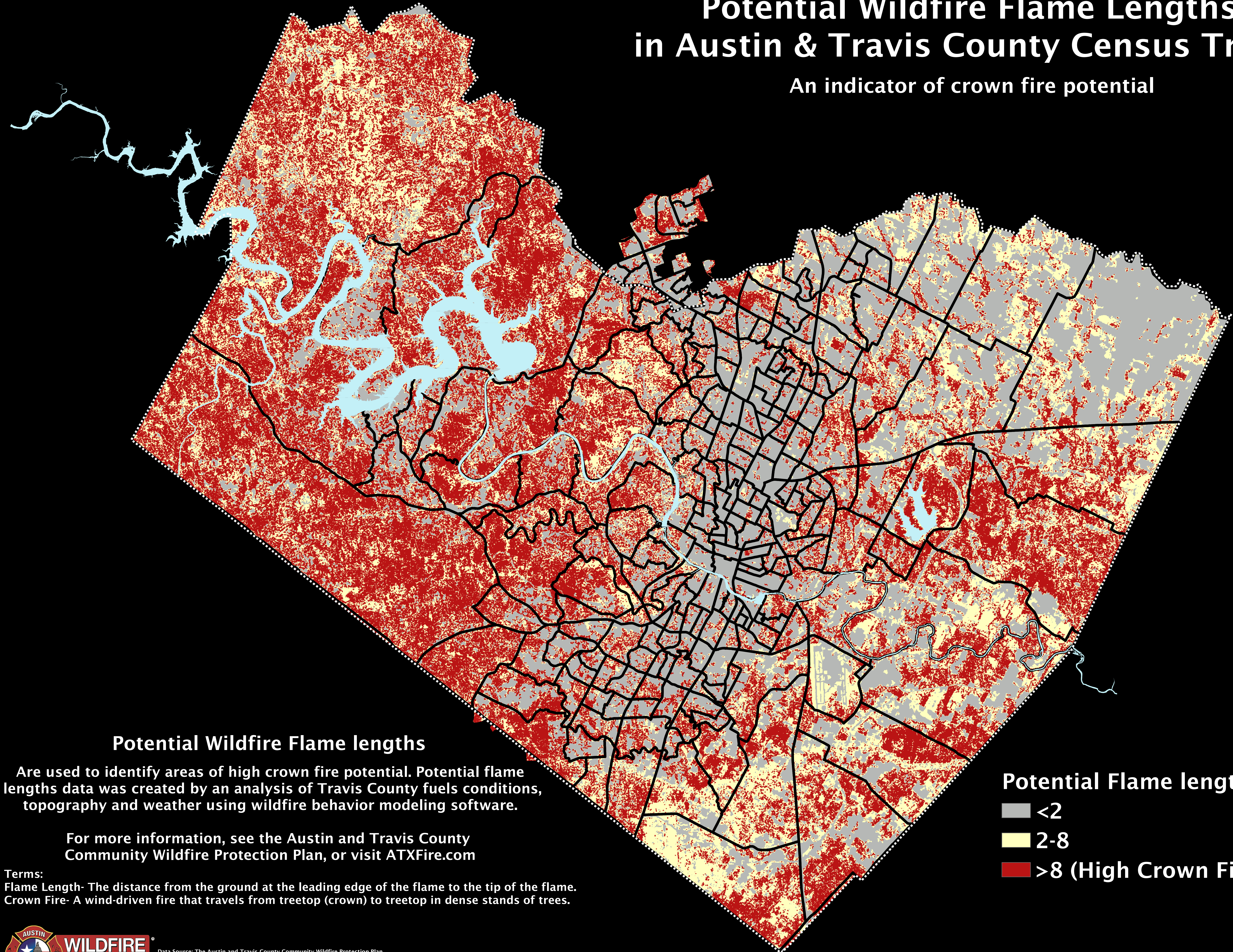


Potential Wildfire Flame Lengths in Austin & Travis County Census Tracts

An indicator of crown fire potential



Potential Wildfire Flame lengths

Are used to identify areas of high crown fire potential. Potential flame lengths data was created by an analysis of Travis County fuels conditions, topography and weather using wildfire behavior modeling software.

For more information, see the Austin and Travis County Community Wildfire Protection Plan, or visit ATXFire.com

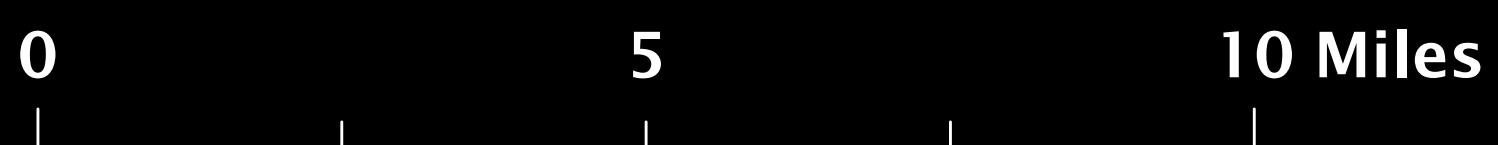
Terms:
Flame Length- The distance from the ground at the leading edge of the flame to the tip of the flame.
Crown Fire- A wind-driven fire that travels from treetop (crown) to treetop in dense stands of trees.

Potential Flame lengths in feet

-  <2
-  2-8
-  >8 (High Crown Fire Potential)



Data Source: The Austin and Travis County Community Wildfire Protection Plan
Projected Coordinate System: NAD 1983 StatePlane Texas Central FIPS 4203 Feet
Projection: Lambert Conformal Conic | Scale: 1:100,000
July 2018 | Nate Casebeer | Austin Fire Department Wildfire Division



Map Disclaimer
The property boundaries and elements are for informational purposes and have not been independently verified. They are not intended for legal, engineering, or other purposes. The data is not intended to be used for any purpose other than the one for which it was collected. The City of Austin is not responsible for any errors or omissions in this map or for any consequences arising from its use. No warranty is made by the City of Austin regarding the accuracy or completeness of the information.