

Services Appendix:

The Siskiyou Region

prepared by
Headwaters Economics
2010



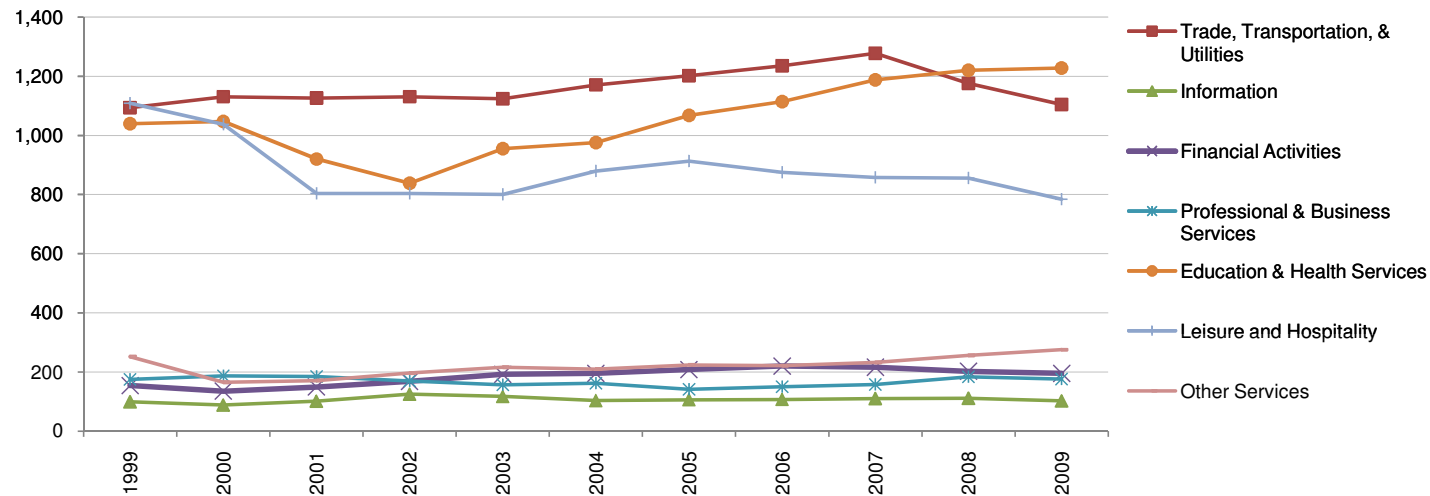
**HEADWATERS
ECONOMICS**

Del Norte County, CA

Employment in Services	1999	2000	2001	2002	2003	2004	2005	2006	2007	2008	2009
Total Services	3,966	3,828	3,460	3,430	3,561	3,697	3,866	3,922	4,046	4,017	3,869
Trade, Transportation, & Utilities	1,094	1,131	1,126	1,131	1,124	1,171	1,202	1,235	1,278	1,176	1,104
Information	99	88	101	125	117	103	106	107	110	111	102
Financial Activities	154	135	149	168	192	195	208	220	216	202	195
Professional & Business Services	175	187	185	169	156	162	141	150	158	184	176
Education & Health Services	1,040	1,047	920	838	955	976	1,068	1,114	1,188	1,220	1,228
Leisure and Hospitality	1,109	1,037	804	804	800	879	913	875	858	856	784
Other Services	252	165	171	196	216	210	224	221	232	256	275

Some data may be withheld due to non-disclosure restrictions, these data are shown as #NA.

Employment in Services, 1999-2009

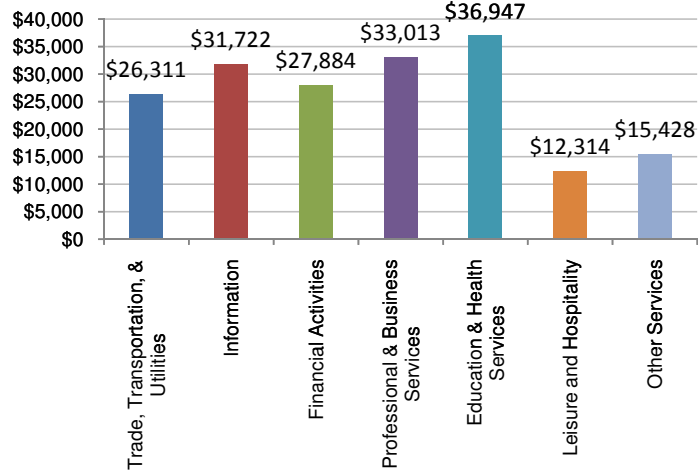


Del Norte County, CA

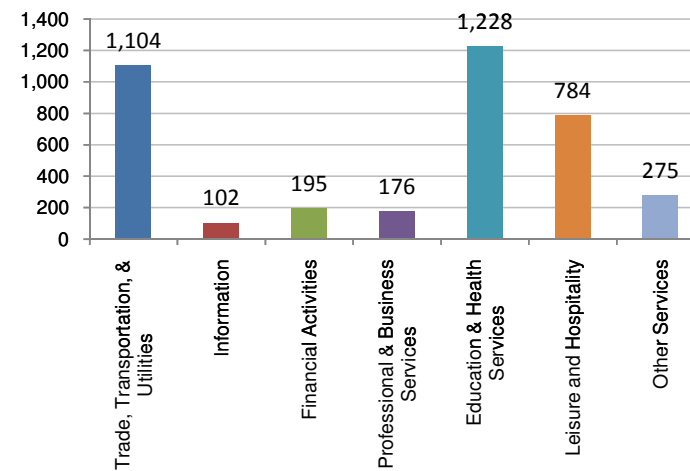
Average Annual Wages in Services	1999	2000	2001	2002	2003	2004	2005	2006	2007	2008	2009
Total Services	\$22,238	\$22,885	\$22,411	\$23,075	\$24,110	\$24,887	\$24,688	\$24,538	\$25,339	\$25,074	\$26,592
Trade, Transportation, & Utilities	\$24,164	\$23,904	\$23,673	\$24,629	\$24,931	\$25,487	\$25,056	\$25,704	\$25,030	\$25,678	\$26,311
Information	\$28,972	\$30,866	\$28,605	\$30,530	\$30,014	\$31,592	\$34,521	\$33,119	\$33,263	\$31,744	\$31,722
Financial Activities	\$26,588	\$26,334	\$25,629	\$25,650	\$27,343	\$28,327	\$27,874	\$29,177	\$29,069	\$27,124	\$27,884
Professional & Business Services	\$25,457	\$23,873	\$22,970	\$23,313	\$23,763	\$25,296	\$25,169	\$21,935	\$30,512	\$28,874	\$33,013
Education & Health Services	\$30,331	\$30,815	\$30,682	\$32,004	\$33,872	\$36,461	\$35,267	\$33,737	\$35,129	\$34,208	\$36,947
Leisure and Hospitality	\$13,651	\$13,572	\$11,165	\$11,887	\$12,125	\$12,030	\$12,553	\$12,001	\$11,874	\$11,833	\$12,314
Other Services	\$9,730	\$14,223	\$15,528	\$14,676	\$15,303	\$14,865	\$14,153	\$14,349	\$15,987	\$15,892	\$15,428

Some data may be withheld due to non-disclosure restrictions, these data are shown as #NA.

Average Annual Wages by Service Sector, 2009 (2009\$s)



Employment by Service Sector, 2009

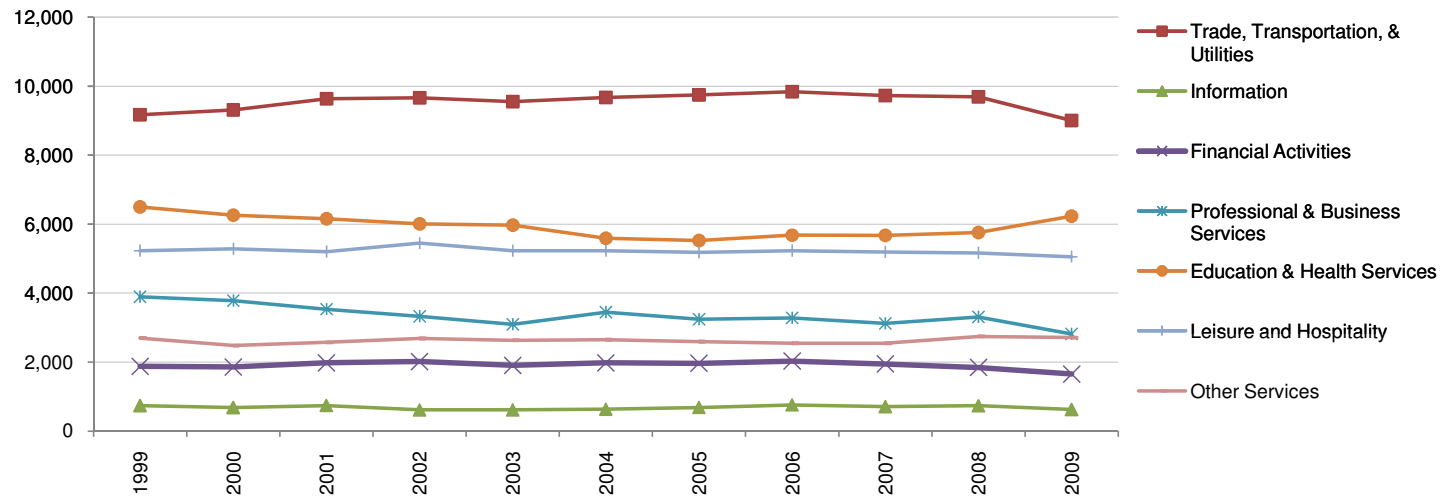


Humboldt County, CA

Employment in Services	1999	2000	2001	2002	2003	2004	2005	2006	2007	2008	2009
Total Services	30,620	30,179	29,843	29,775	28,991	29,204	28,944	29,359	29,015	29,664	28,267
Trade, Transportation, & Utilities	9,168	9,309	9,633	9,662	9,547	9,671	9,744	9,836	9,728	9,689	9,005
Information	741	685	743	615	617	637	687	761	711	735	627
Financial Activities	1,875	1,857	1,981	2,017	1,903	1,978	1,966	2,031	1,945	1,846	1,654
Professional & Business Services	3,892	3,780	3,535	3,326	3,093	3,448	3,240	3,277	3,124	3,311	2,812
Education & Health Services	6,502	6,257	6,158	6,010	5,968	5,591	5,521	5,678	5,676	5,757	6,231
Leisure and Hospitality	5,228	5,284	5,199	5,446	5,226	5,229	5,183	5,232	5,195	5,163	5,056
Other Services	2,700	2,479	2,572	2,689	2,634	2,647	2,594	2,545	2,548	2,745	2,710

Some data may be withheld due to non-disclosure restrictions, these data are shown as #NA.

Employment in Services, 1999-2009

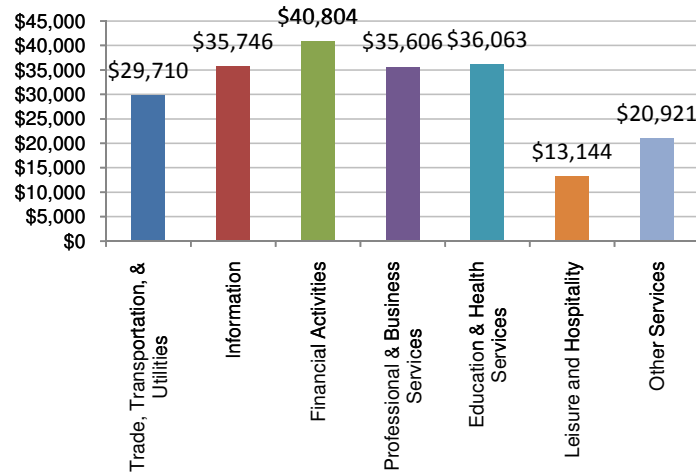


Humboldt County, CA

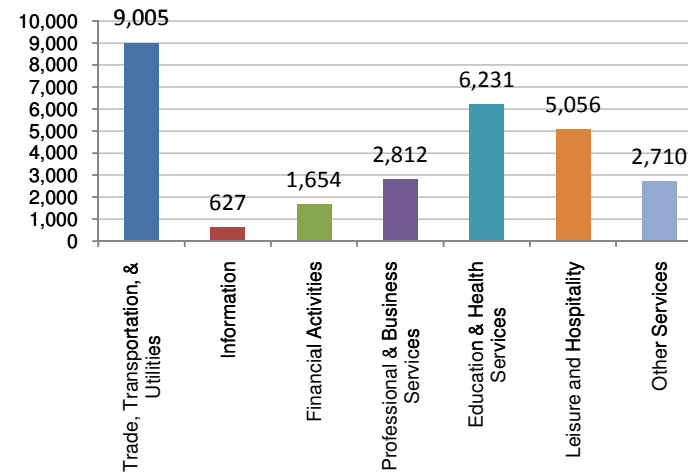
Average Annual Wages in Services	1999	2000	2001	2002	2003	2004	2005	2006	2007	2008	2009
Total Services	\$26,092	\$26,460	\$26,268	\$27,106	\$27,250	\$27,520	\$27,857	\$28,121	\$28,571	\$28,769	\$28,663
Trade, Transportation, & Utilities	\$28,559	\$28,502	\$27,440	\$28,246	\$28,334	\$28,773	\$28,755	\$29,001	\$28,925	\$29,437	\$29,710
Information	\$29,914	\$34,361	\$34,555	\$31,578	\$32,336	\$34,714	\$32,472	\$34,934	\$33,615	\$34,578	\$35,746
Financial Activities	\$35,690	\$37,057	\$37,055	\$38,726	\$43,757	\$42,753	\$43,450	\$43,387	\$43,350	\$40,214	\$40,804
Professional & Business Services	\$31,297	\$30,886	\$30,542	\$31,858	\$31,263	\$30,373	\$33,573	\$34,425	\$35,734	\$36,708	\$35,606
Education & Health Services	\$30,608	\$30,556	\$31,719	\$32,985	\$33,002	\$34,714	\$34,660	\$34,319	\$35,703	\$36,059	\$36,063
Leisure and Hospitality	\$12,362	\$12,688	\$12,061	\$13,061	\$12,595	\$12,237	\$12,169	\$12,105	\$12,637	\$12,756	\$13,144
Other Services	\$17,597	\$20,187	\$20,976	\$22,608	\$21,532	\$21,103	\$21,165	\$21,478	\$21,852	\$21,346	\$20,921

Some data may be withheld due to non-disclosure restrictions, these data are shown as #NA.

Average Annual Wages by Service Sector, 2009 (2009\$s)



Employment by Service Sector, 2009

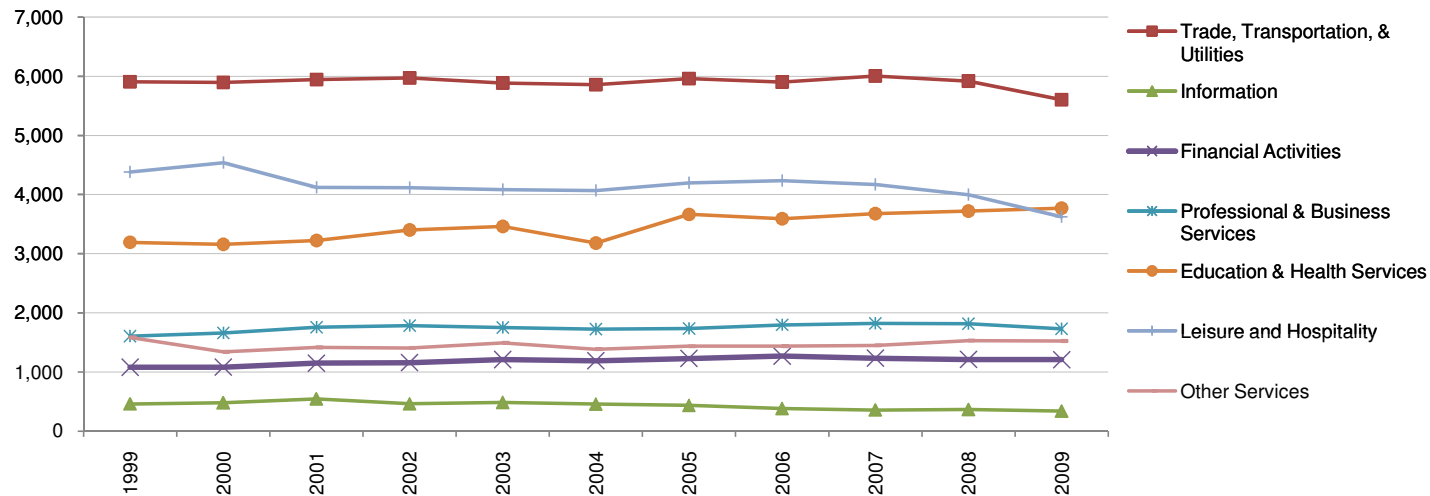


Mendocino County, CA

Employment in Services	1999	2000	2001	2002	2003	2004	2005	2006	2007	2008	2009
Total Services	18,384	18,391	18,163	18,313	18,377	17,863	18,657	18,608	18,732	18,652	17,858
Trade, Transportation, & Utilities	5,906	5,898	5,944	5,973	5,886	5,859	5,961	5,899	6,006	5,918	5,604
Information	460	480	545	462	485	456	434	382	357	364	337
Financial Activities	1,080	1,082	1,150	1,158	1,210	1,189	1,228	1,268	1,234	1,211	1,209
Professional & Business Services	1,604	1,659	1,758	1,784	1,753	1,726	1,733	1,797	1,821	1,814	1,731
Education & Health Services	3,193	3,156	3,222	3,402	3,463	3,179	3,664	3,589	3,679	3,722	3,767
Leisure and Hospitality	4,382	4,538	4,121	4,114	4,085	4,069	4,199	4,235	4,169	3,995	3,625
Other Services	1,583	1,340	1,414	1,407	1,490	1,385	1,435	1,438	1,450	1,531	1,523

Some data may be withheld due to non-disclosure restrictions, these data are shown as #NA.

Employment in Services, 1999-2009

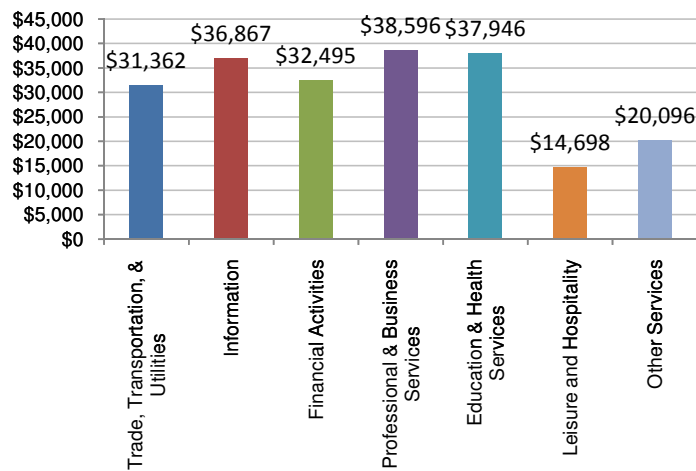


Mendocino County, CA

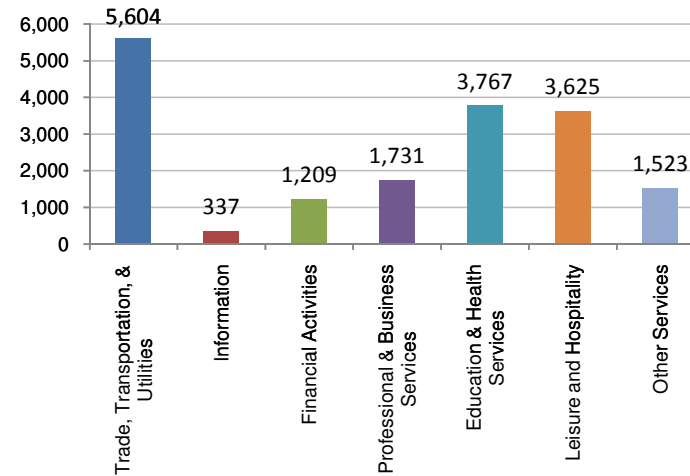
Average Annual Wages in Services	1999	2000	2001	2002	2003	2004	2005	2006	2007	2008	2009
Total Services	\$24,938	\$25,877	\$26,230	\$26,802	\$26,891	\$27,110	\$27,912	\$28,105	\$28,642	\$29,386	\$29,247
Trade, Transportation, & Utilities	\$27,950	\$29,134	\$28,746	\$29,611	\$29,558	\$30,369	\$31,112	\$31,570	\$31,643	\$32,082	\$31,362
Information	\$36,957	\$38,097	\$40,334	\$32,574	\$33,152	\$42,123	\$42,187	\$41,341	\$41,716	\$42,244	\$36,867
Financial Activities	\$30,737	\$31,041	\$30,339	\$31,166	\$31,301	\$32,268	\$31,686	\$32,132	\$32,957	\$36,512	\$32,495
Professional & Business Services	\$32,420	\$32,533	\$34,686	\$33,896	\$33,090	\$33,077	\$32,929	\$33,719	\$35,108	\$37,295	\$38,596
Education & Health Services	\$29,867	\$30,485	\$31,765	\$33,190	\$34,449	\$32,764	\$36,070	\$35,830	\$36,932	\$37,827	\$37,946
Leisure and Hospitality	\$14,716	\$14,957	\$14,124	\$14,866	\$14,292	\$14,400	\$14,166	\$14,657	\$14,732	\$14,591	\$14,698
Other Services	\$16,339	\$20,279	\$19,087	\$19,971	\$20,415	\$20,828	\$20,458	\$20,114	\$20,239	\$19,641	\$20,096

Some data may be withheld due to non-disclosure restrictions, these data are shown as #NA.

Average Annual Wages by Service Sector, 2009 (2009\$s)



Employment by Service Sector, 2009

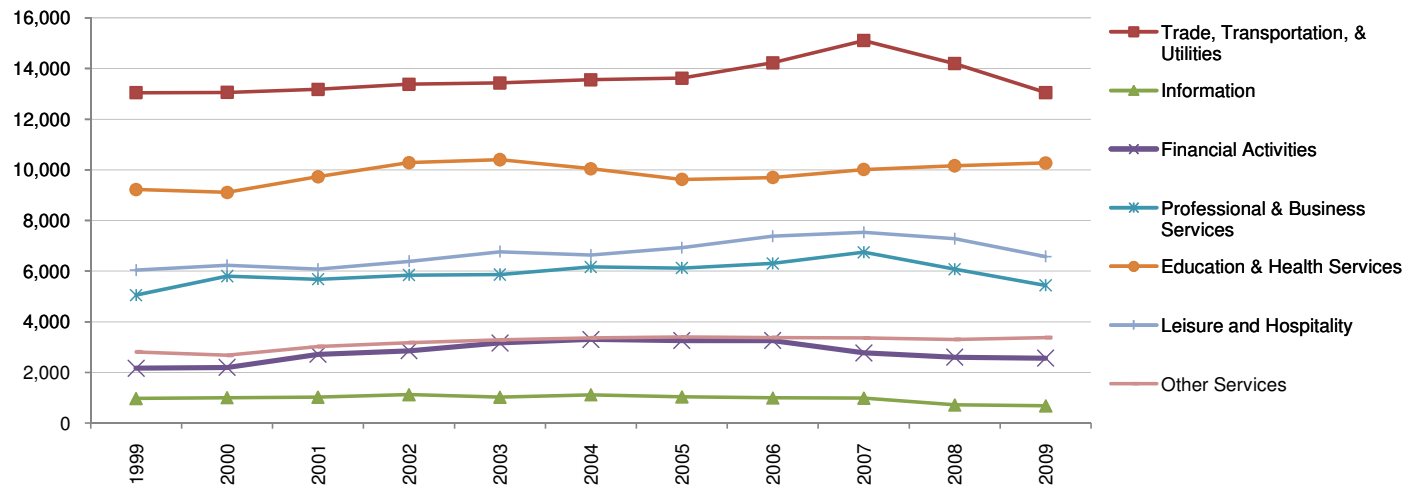


Shasta County, CA

Employment in Services	1999	2000	2001	2002	2003	2004	2005	2006	2007	2008	2009
Total Services	39,444	40,228	41,449	43,069	43,948	44,189	43,979	45,240	46,559	44,560	42,076
Trade, Transportation, & Utilities	13,046	13,062	13,182	13,381	13,435	13,558	13,620	14,228	15,108	14,200	13,052
Information	969	1,002	1,022	1,122	1,022	1,118	1,035	993	983	715	679
Financial Activities	2,167	2,199	2,715	2,857	3,165	3,301	3,261	3,261	2,774	2,600	2,566
Professional & Business Services	5,055	5,802	5,682	5,846	5,865	6,164	6,124	6,305	6,746	6,078	5,438
Education & Health Services	9,224	9,112	9,730	10,285	10,403	10,048	9,622	9,697	10,015	10,163	10,272
Leisure and Hospitality	6,041	6,228	6,078	6,387	6,767	6,633	6,922	7,376	7,531	7,275	6,577
Other Services	2,810	2,676	3,024	3,179	3,281	3,362	3,395	3,380	3,358	3,305	3,378

Some data may be withheld due to non-disclosure restrictions, these data are shown as #NA.

Employment in Services, 1999-2009

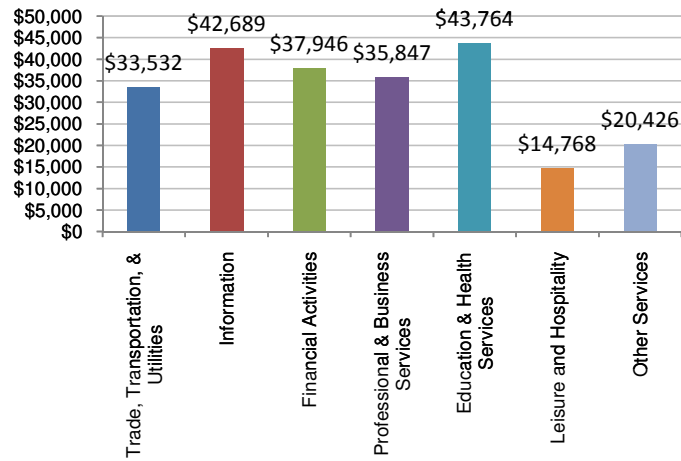


Shasta County, CA

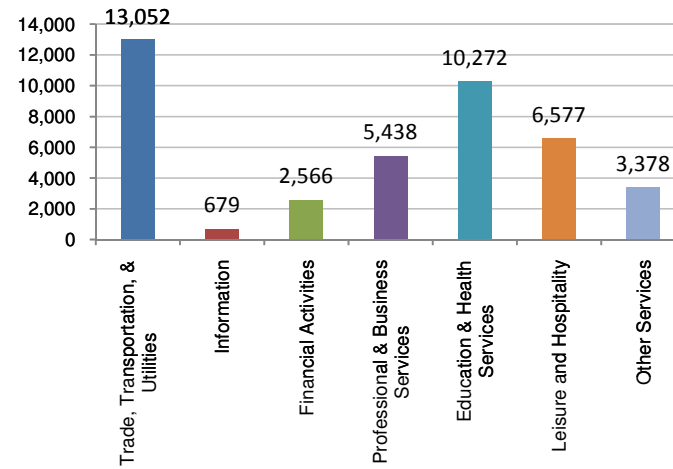
Average Annual Wages in Services	1999	2000	2001	2002	2003	2004	2005	2006	2007	2008	2009
Total Services	\$29,636	\$29,868	\$30,700	\$31,387	\$31,368	\$32,028	\$32,283	\$32,149	\$32,854	\$32,021	\$32,752
Trade, Transportation, & Utilities	\$31,488	\$31,814	\$32,391	\$32,964	\$32,666	\$33,124	\$33,279	\$33,137	\$34,123	\$33,528	\$33,532
Information	\$46,324	\$45,149	\$45,202	\$39,636	\$38,833	\$43,252	\$42,327	\$40,399	\$42,003	\$42,844	\$42,689
Financial Activities	\$34,247	\$34,520	\$34,240	\$35,570	\$38,649	\$38,971	\$40,324	\$39,889	\$41,457	\$39,376	\$37,946
Professional & Business Services	\$33,604	\$30,936	\$32,936	\$34,503	\$34,173	\$33,407	\$34,830	\$34,714	\$35,969	\$35,217	\$35,847
Education & Health Services	\$35,560	\$36,889	\$37,961	\$38,918	\$38,936	\$41,120	\$42,223	\$43,003	\$42,961	\$41,618	\$43,764
Leisure and Hospitality	\$13,914	\$14,286	\$14,065	\$14,817	\$14,861	\$14,709	\$14,453	\$14,267	\$14,599	\$14,509	\$14,768
Other Services	\$18,470	\$20,319	\$21,174	\$21,291	\$21,749	\$21,539	\$21,107	\$21,194	\$22,002	\$20,796	\$20,426

Some data may be withheld due to non-disclosure restrictions, these data are shown as #NA.

Average Annual Wages by Service Sector, 2009 (2009\$)



Employment by Service Sector, 2009

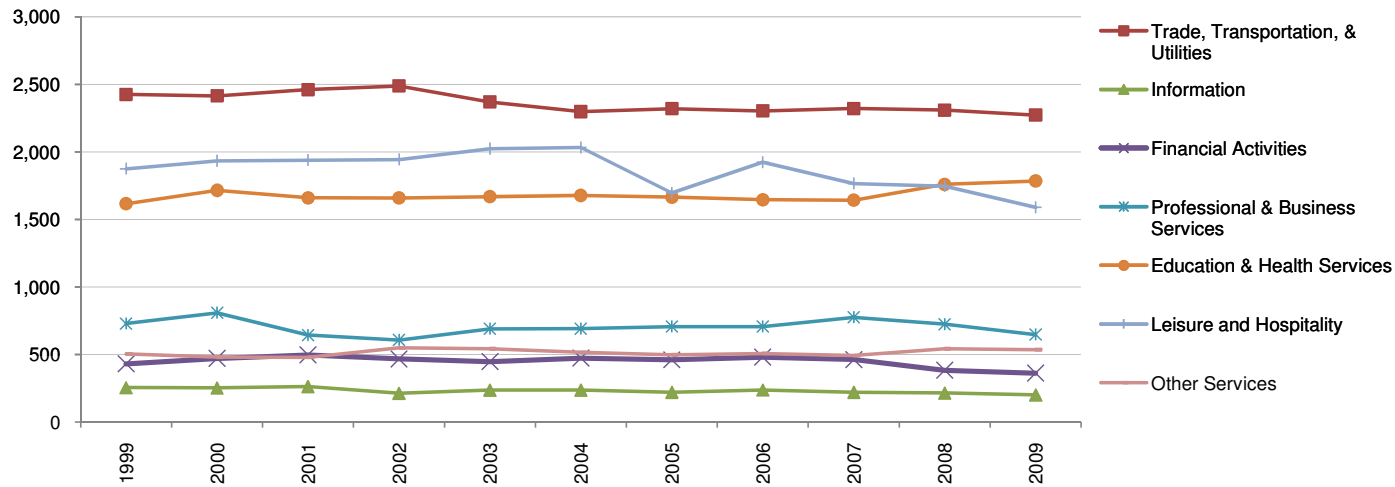


Siskiyou County, CA

Employment in Services	1999	2000	2001	2002	2003	2004	2005	2006	2007	2008	2009
Total Services	7,847	8,089	7,950	7,932	7,982	7,926	7,571	7,808	7,694	7,727	7,416
Trade, Transportation, & Utilities	2,426	2,416	2,462	2,489	2,371	2,299	2,321	2,304	2,322	2,310	2,274
Information	255	253	263	213	237	237	221	238	221	215	201
Financial Activities	431	471	497	467	447	474	461	481	463	384	362
Professional & Business Services	729	809	644	607	690	691	707	707	776	725	648
Education & Health Services	1,617	1,716	1,661	1,660	1,669	1,678	1,666	1,647	1,643	1,760	1,785
Leisure and Hospitality	1,875	1,934	1,939	1,944	2,024	2,033	1,696	1,924	1,766	1,747	1,590
Other Services	504	481	480	549	543	516	498	508	492	543	536

Some data may be withheld due to non-disclosure restrictions, these data are shown as #NA.

Employment in Services, 1999-2009

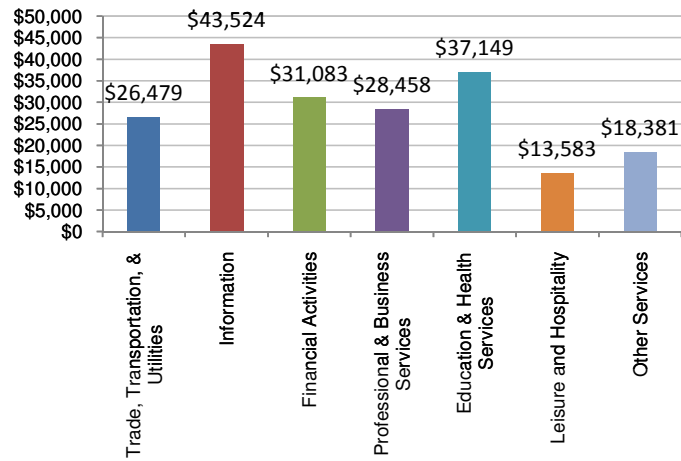


Siskiyou County, CA

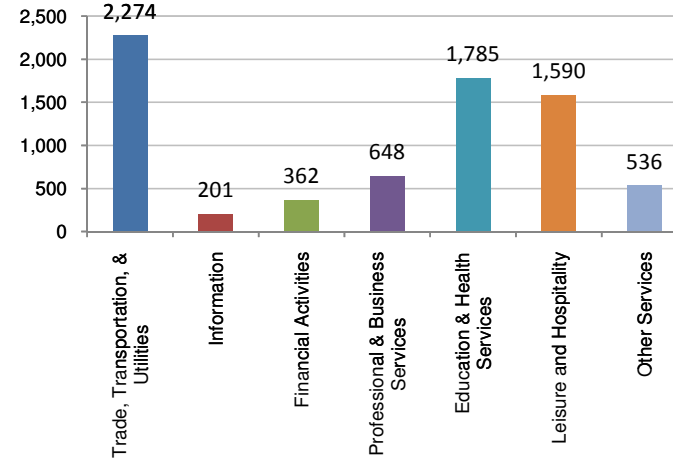
Average Annual Wages in Services	1999	2000	2001	2002	2003	2004	2005	2006	2007	2008	2009
Total Services	\$22,644	\$23,058	\$23,948	\$24,461	\$24,280	\$24,741	\$25,106	\$25,546	\$26,042	\$26,313	\$26,548
Trade, Transportation, & Utilities	\$24,777	\$24,678	\$25,008	\$25,623	\$25,876	\$26,007	\$25,450	\$27,002	\$25,752	\$25,868	\$26,479
Information	\$37,529	\$39,722	\$41,408	\$41,761	\$40,460	\$43,817	\$46,249	\$45,882	\$42,963	\$43,035	\$43,524
Financial Activities	\$26,435	\$27,912	\$29,581	\$30,674	\$31,865	\$33,101	\$32,307	\$32,160	\$33,159	\$35,959	\$31,083
Professional & Business Services	\$24,112	\$25,597	\$29,449	\$30,085	\$28,472	\$27,093	\$27,971	\$27,700	\$28,381	\$29,421	\$28,458
Education & Health Services	\$28,447	\$28,576	\$29,680	\$30,487	\$31,434	\$32,856	\$33,300	\$34,960	\$36,991	\$37,034	\$37,149
Leisure and Hospitality	\$12,651	\$12,333	\$12,978	\$14,006	\$12,906	\$13,064	\$12,413	\$12,596	\$13,119	\$13,172	\$13,583
Other Services	\$17,985	\$20,552	\$20,267	\$19,908	\$19,093	\$19,149	\$19,222	\$18,689	\$19,263	\$18,804	\$18,381

Some data may be withheld due to non-disclosure restrictions, these data are shown as #NA.

Average Annual Wages by Service Sector, 2009 (2009\$)



Employment by Service Sector, 2009

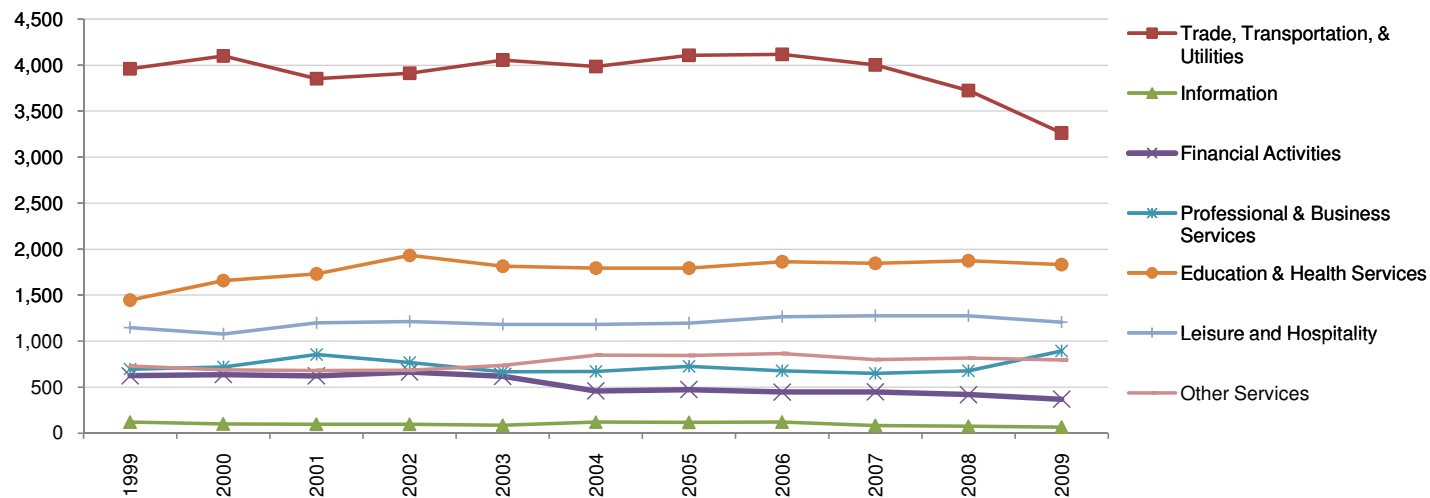


Tehama County, CA

Employment in Services	1999	2000	2001	2002	2003	2004	2005	2006	2007	2008	2009
Total Services	8,724	8,974	9,040	9,269	9,154	9,053	9,258	9,353	9,108	8,900	8,455
Trade, Transportation, & Utilities	3,962	4,101	3,852	3,913	4,053	3,984	4,108	4,116	4,001	3,723	3,263
Information	119	99	96	96	86	119	118	120	83	74	65
Financial Activities	624	636	623	664	617	459	472	447	449	419	369
Professional & Business Services	696	719	855	766	666	669	725	676	648	676	892
Education & Health Services	1,445	1,658	1,730	1,931	1,814	1,793	1,795	1,864	1,845	1,875	1,831
Leisure and Hospitality	1,148	1,076	1,197	1,214	1,181	1,180	1,195	1,265	1,276	1,276	1,207
Other Services	730	686	681	684	737	849	843	865	800	816	795

Some data may be withheld due to non-disclosure restrictions, these data are shown as #NA.

Employment in Services, 1999-2009

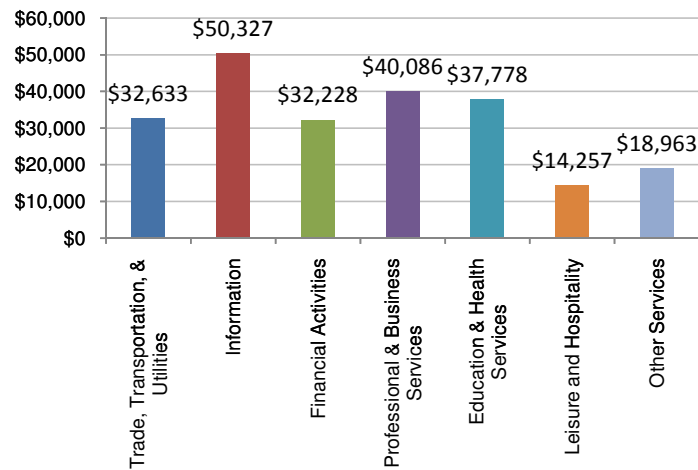


Tehama County, CA

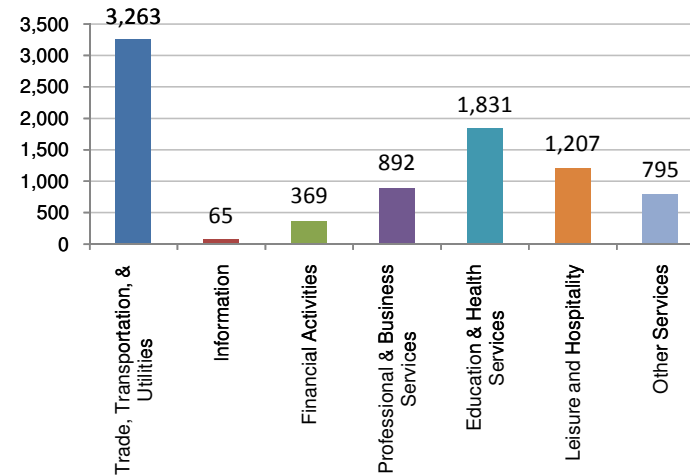
Average Annual Wages in Services	1999	2000	2001	2002	2003	2004	2005	2006	2007	2008	2009
Total Services	\$27,541	\$27,749	\$27,795	\$28,504	\$29,447	\$29,030	\$28,939	\$28,852	\$29,681	\$29,704	\$30,687
Trade, Transportation, & Utilities	\$32,629	\$32,354	\$33,061	\$34,718	\$35,657	\$34,359	\$34,111	\$33,589	\$33,935	\$34,427	\$32,633
Information	\$33,029	\$36,890	\$35,591	\$34,978	\$34,146	\$44,140	\$43,142	\$44,011	\$44,348	\$47,790	\$50,327
Financial Activities	\$28,507	\$29,536	\$28,201	\$29,893	\$29,079	\$27,868	\$29,157	\$33,056	\$34,538	\$32,681	\$32,228
Professional & Business Services	\$28,767	\$27,643	\$30,001	\$29,148	\$29,380	\$31,123	\$28,783	\$28,036	\$28,703	\$28,266	\$40,086
Education & Health Services	\$28,056	\$28,132	\$28,053	\$27,297	\$30,007	\$30,709	\$31,383	\$31,636	\$33,629	\$34,462	\$37,778
Leisure and Hospitality	\$12,512	\$12,110	\$12,042	\$12,674	\$12,009	\$12,855	\$12,858	\$13,083	\$13,921	\$14,248	\$14,257
Other Services	\$19,661	\$20,965	\$20,869	\$21,481	\$21,681	\$19,830	\$19,394	\$19,729	\$21,056	\$19,699	\$18,963

Some data may be withheld due to non-disclosure restrictions, these data are shown as #NA.

Average Annual Wages by Service Sector, 2009 (2009\$s)



Employment by Service Sector, 2009

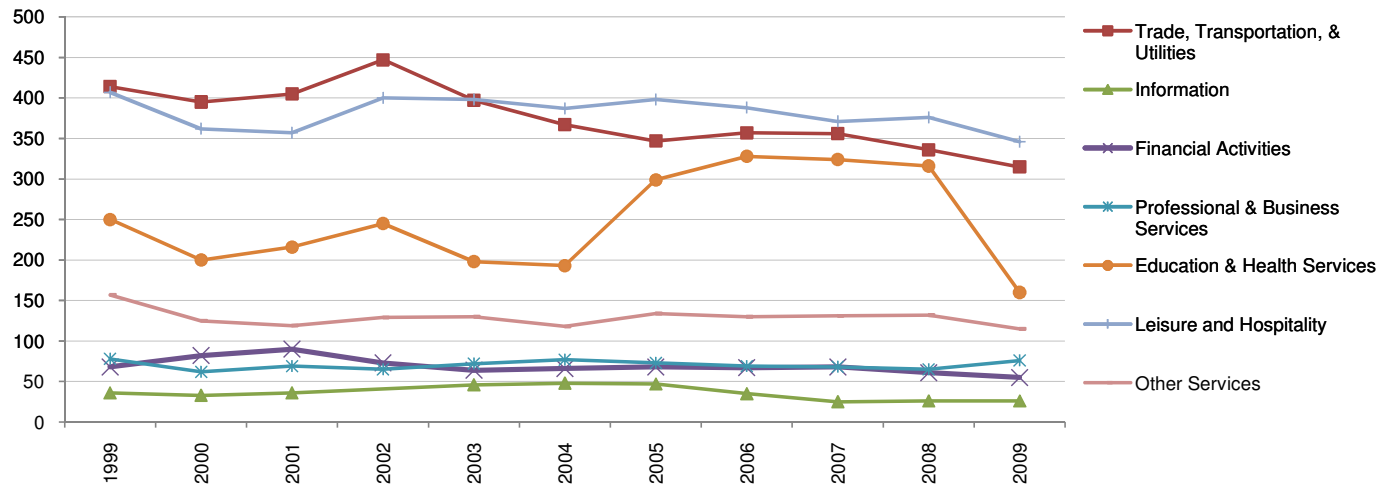


Trinity County, CA

Employment in Services	1999	2000	2001	2002	2003	2004	2005	2006	2007	2008	2009
Total Services	1,411	1,259	1,291	1,394	1,305	1,255	1,366	1,373	1,345	1,315	1,092
Trade, Transportation, & Utilities	414	395	405	447	397	367	347	357	356	336	315
Information	36	33	36	#N/A	46	48	47	35	25	26	26
Financial Activities	68	82	90	73	64	66	68	67	68	61	55
Professional & Business Services	78	62	69	65	72	77	73	69	68	65	76
Education & Health Services	250	200	216	245	198	193	299	328	324	316	160
Leisure and Hospitality	407	362	357	400	398	387	398	388	371	376	346
Other Services	157	125	119	129	130	118	134	130	131	132	115

Some data may be withheld due to non-disclosure restrictions, these data are shown as #N/A.

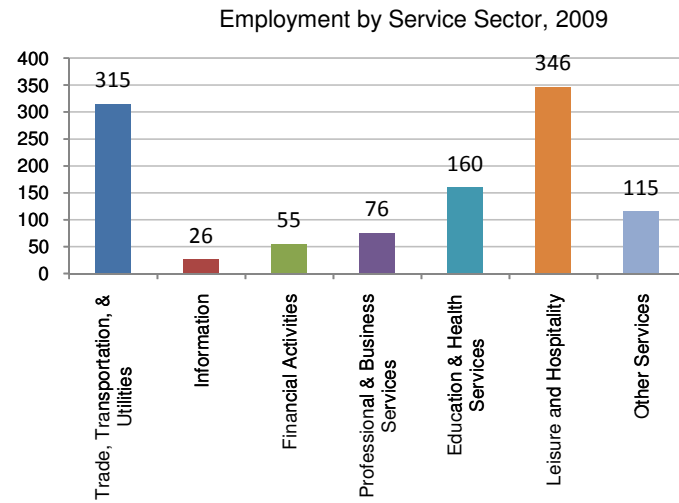
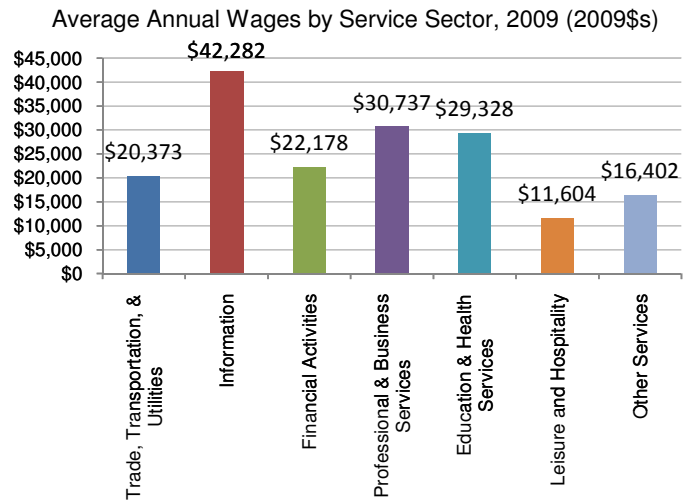
Employment in Services, 1999-2009



Trinity County, CA

Average Annual Wages in Services	1999	2000	2001	2002	2003	2004	2005	2006	2007	2008	2009
Total Services	\$17,558	\$18,277	\$18,574	\$19,466	\$18,982	\$18,992	\$19,608	\$20,760	\$21,726	\$21,154	\$19,821
Trade, Transportation, & Utilities	\$18,967	\$18,902	\$18,809	\$19,957	\$19,913	\$19,481	\$18,852	\$19,259	\$19,738	\$20,126	\$20,373
Information	\$38,304	\$40,988	\$40,385	na	\$33,660	\$30,572	\$26,523	\$32,352	\$38,820	\$40,544	\$42,282
Financial Activities	\$23,824	\$22,794	\$21,072	\$24,576	\$21,616	\$23,211	\$22,217	\$23,216	\$23,712	\$22,784	\$22,178
Professional & Business Services	\$22,832	\$27,712	\$27,393	\$31,237	\$30,624	\$27,632	\$31,563	\$34,063	\$29,844	\$30,556	\$30,737
Education & Health Services	\$22,241	\$24,058	\$23,346	\$24,158	\$24,184	\$25,635	\$28,744	\$31,051	\$34,135	\$32,620	\$29,328
Leisure and Hospitality	\$11,847	\$11,436	\$12,451	\$12,562	\$11,999	\$12,482	\$11,662	\$11,735	\$12,397	\$11,515	\$11,604
Other Services	\$11,136	\$13,195	\$13,910	\$14,613	\$16,623	\$15,288	\$14,544	\$14,441	\$14,233	\$14,696	\$16,402

Some data may be withheld due to non-disclosure restrictions, these data are shown as #NA.

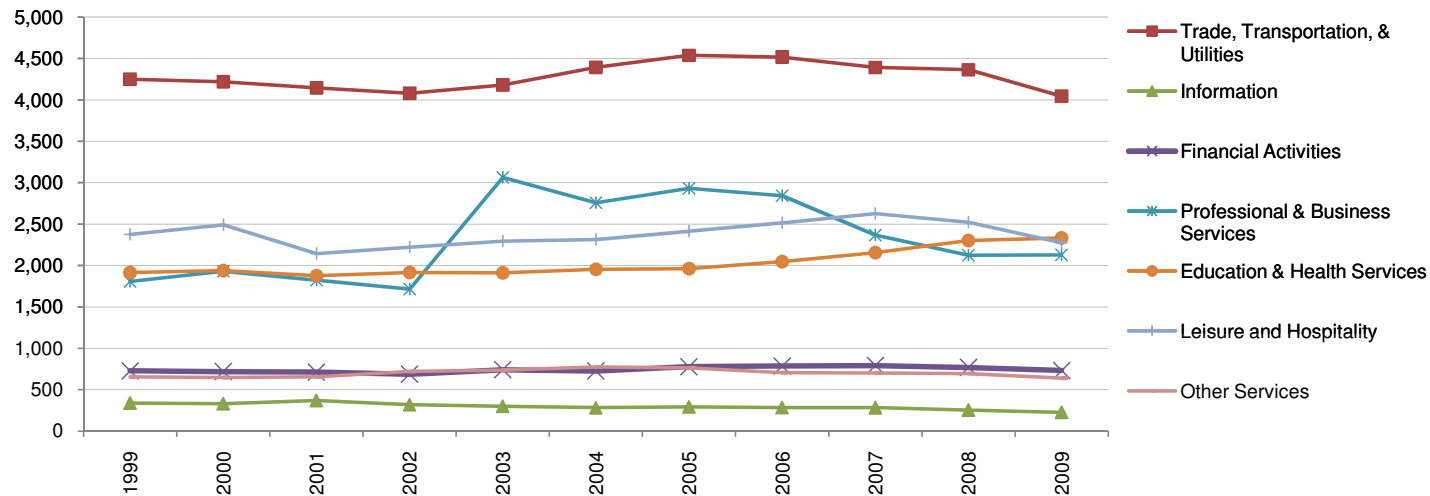


Coos County, OR

Employment in Services	1999	2000	2001	2002	2003	2004	2005	2006	2007	2008	2009
Total Services	12,133	12,353	11,724	11,663	13,248	13,219	13,694	13,705	13,318	13,033	12,381
Trade, Transportation, & Utilities	4,251	4,219	4,145	4,081	4,180	4,394	4,538	4,517	4,391	4,364	4,044
Information	337	330	368	319	301	283	293	285	283	253	228
Financial Activities	728	718	712	688	741	727	778	786	791	768	731
Professional & Business Services	1,806	1,932	1,821	1,713	3,064	2,759	2,933	2,844	2,366	2,123	2,129
Education & Health Services	1,917	1,939	1,877	1,915	1,911	1,953	1,962	2,047	2,154	2,303	2,332
Leisure and Hospitality	2,375	2,493	2,145	2,221	2,296	2,313	2,413	2,514	2,625	2,521	2,274
Other Services	655	647	654	720	736	774	763	707	703	696	639

Some data may be withheld due to non-disclosure restrictions, these data are shown as #NA.

Employment in Services, 1999-2009

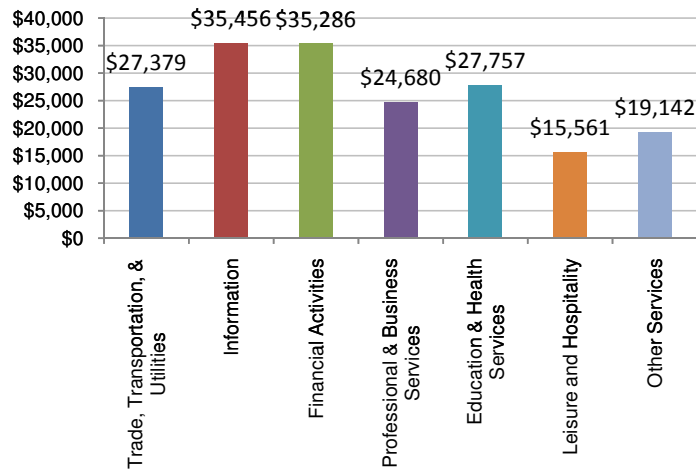


Coos County, OR

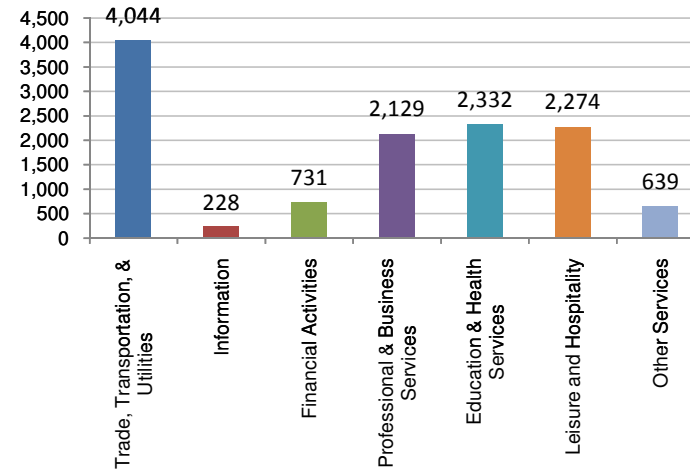
Average Annual Wages in Services	1999	2000	2001	2002	2003	2004	2005	2006	2007	2008	2009
Total Services	\$26,233	\$25,556	\$25,700	\$26,165	\$25,446	\$25,836	\$25,643	\$24,997	\$25,911	\$25,542	\$25,000
Trade, Transportation, & Utilities	\$30,150	\$29,480	\$29,095	\$29,698	\$29,979	\$30,454	\$30,281	\$29,862	\$29,837	\$28,698	\$27,379
Information	\$41,485	\$42,885	\$39,843	\$36,657	\$38,768	\$40,421	\$35,427	\$33,472	\$35,915	\$34,664	\$35,456
Financial Activities	\$30,966	\$32,595	\$33,626	\$32,693	\$34,095	\$33,708	\$34,026	\$34,400	\$35,268	\$34,504	\$35,286
Professional & Business Services	\$25,311	\$22,480	\$24,322	\$27,908	\$23,095	\$23,106	\$23,136	\$20,420	\$25,078	\$25,642	\$24,680
Education & Health Services	\$28,696	\$28,509	\$29,274	\$28,872	\$28,705	\$29,350	\$29,127	\$29,418	\$28,536	\$28,550	\$27,757
Leisure and Hospitality	\$14,907	\$15,100	\$13,437	\$14,021	\$14,333	\$14,685	\$15,027	\$15,291	\$15,602	\$15,414	\$15,561
Other Services	\$23,016	\$22,653	\$21,394	\$21,412	\$21,826	\$21,260	\$20,106	\$20,233	\$20,195	\$19,035	\$19,142

Some data may be withheld due to non-disclosure restrictions, these data are shown as #NA.

Average Annual Wages by Service Sector, 2009 (2009\$s)



Employment by Service Sector, 2009

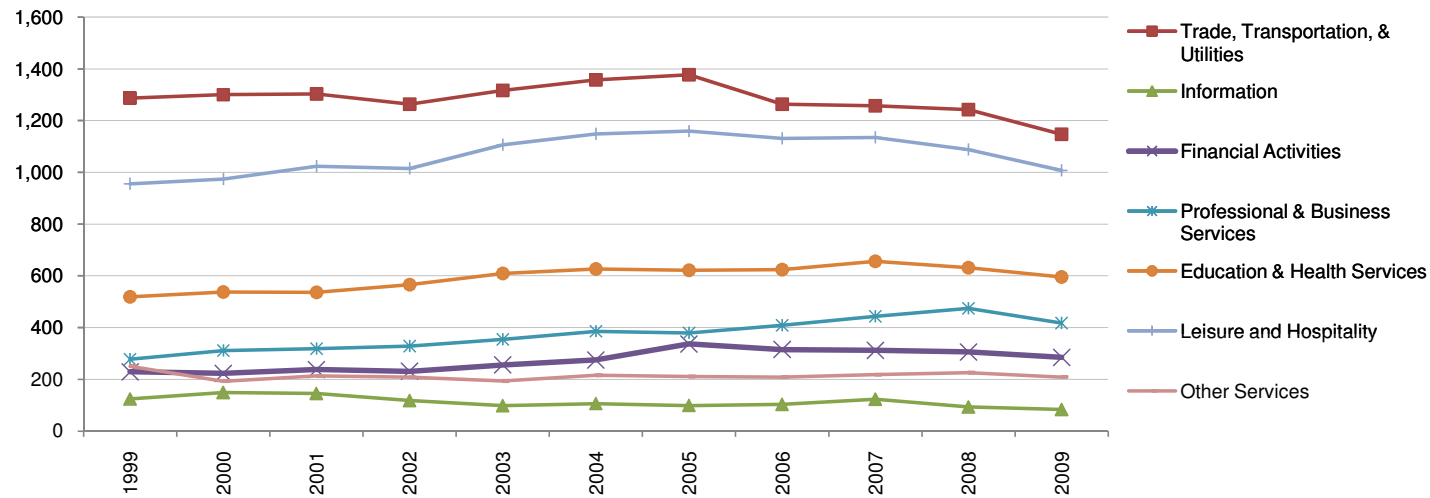


Curry County, OR

Employment in Services	1999	2000	2001	2002	2003	2004	2005	2006	2007	2008	2009
Total Services	3,644	3,690	3,779	3,736	3,936	4,117	4,184	4,055	4,148	4,061	3,744
Trade, Transportation, & Utilities	1,287	1,300	1,303	1,264	1,317	1,357	1,377	1,264	1,257	1,242	1,147
Information	124	149	145	118	98	106	99	103	123	93	83
Financial Activities	229	223	238	231	256	275	337	315	312	306	285
Professional & Business Services	278	311	319	329	354	386	379	409	444	474	418
Education & Health Services	519	538	536	566	609	627	622	624	656	632	596
Leisure and Hospitality	955	974	1,024	1,015	1,107	1,148	1,159	1,131	1,135	1,088	1,007
Other Services	251	193	213	208	194	216	211	209	218	226	209

Some data may be withheld due to non-disclosure restrictions, these data are shown as #NA.

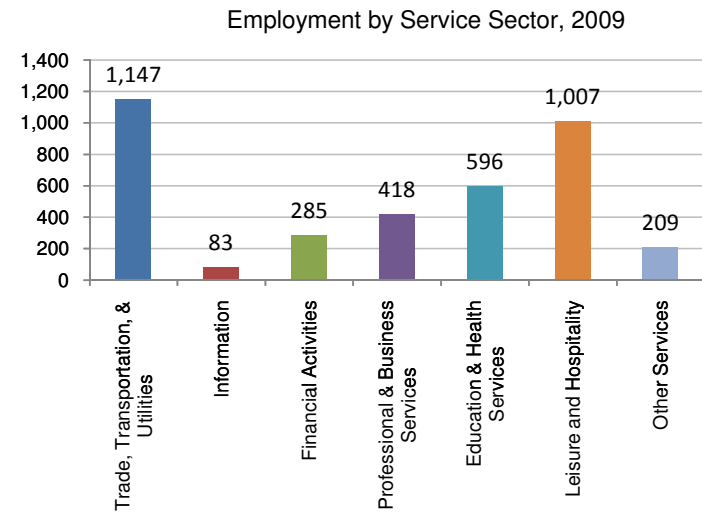
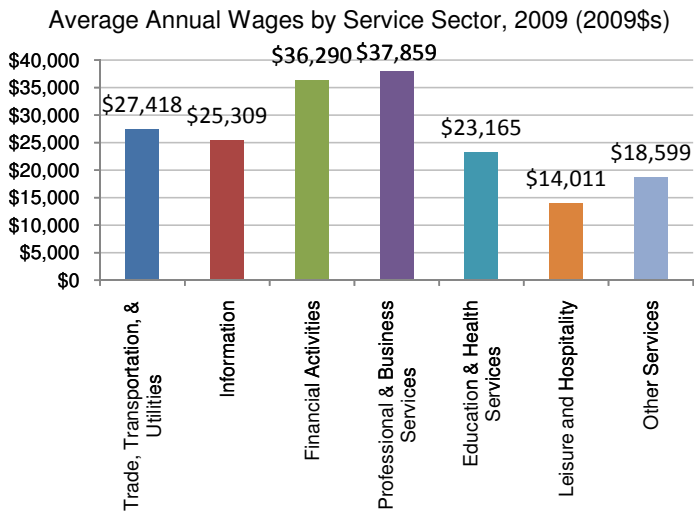
Employment in Services, 1999-2009



Curry County, OR

Average Annual Wages in Services	1999	2000	2001	2002	2003	2004	2005	2006	2007	2008	2009
Total Services	\$21,588	\$22,067	\$21,402	\$22,535	\$22,097	\$22,443	\$22,897	\$23,828	\$23,808	\$23,627	\$24,436
Trade, Transportation, & Utilities	\$24,300	\$25,429	\$23,766	\$25,643	\$25,073	\$26,301	\$26,096	\$26,906	\$26,824	\$26,395	\$27,418
Information	\$28,718	\$29,638	\$27,133	\$29,471	\$30,175	\$23,562	\$23,468	\$24,217	\$22,415	\$23,915	\$25,309
Financial Activities	\$24,977	\$25,662	\$25,313	\$28,928	\$28,115	\$25,484	\$29,766	\$32,488	\$32,967	\$34,789	\$36,290
Professional & Business Services	\$32,810	\$33,178	\$34,688	\$36,754	\$34,607	\$36,607	\$37,079	\$40,132	\$38,707	\$36,095	\$37,859
Education & Health Services	\$21,862	\$20,854	\$21,478	\$22,157	\$21,967	\$21,988	\$22,669	\$22,932	\$22,837	\$22,648	\$23,165
Leisure and Hospitality	\$14,206	\$13,681	\$13,507	\$13,136	\$13,202	\$13,377	\$13,174	\$13,446	\$13,646	\$13,569	\$14,011
Other Services	\$16,126	\$17,347	\$16,573	\$17,305	\$18,364	\$17,970	\$19,326	\$18,818	\$19,498	\$18,164	\$18,599

Some data may be withheld due to non-disclosure restrictions, these data are shown as #NA.

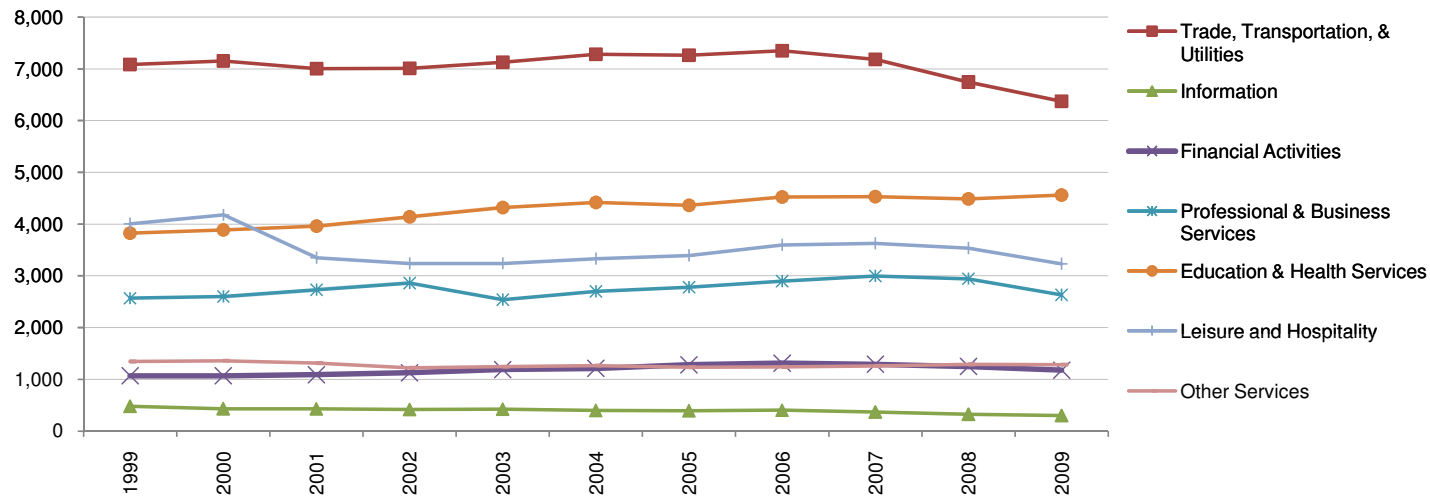


Douglas County, OR

Employment in Services	1999	2000	2001	2002	2003	2004	2005	2006	2007	2008	2009
Total Services	20,503	20,811	19,893	20,038	20,104	20,615	20,722	21,335	21,270	20,590	19,578
Trade, Transportation, & Utilities	7,083	7,153	7,002	7,009	7,126	7,282	7,265	7,349	7,183	6,747	6,376
Information	479	433	428	419	426	399	396	404	370	326	302
Financial Activities	1,068	1,068	1,090	1,128	1,189	1,210	1,281	1,314	1,293	1,248	1,178
Professional & Business Services	2,567	2,602	2,733	2,863	2,537	2,699	2,780	2,898	2,994	2,944	2,633
Education & Health Services	3,823	3,886	3,962	4,140	4,321	4,419	4,362	4,525	4,529	4,489	4,563
Leisure and Hospitality	4,004	4,175	3,352	3,239	3,241	3,333	3,394	3,597	3,627	3,536	3,230
Other Services	1,347	1,361	1,313	1,224	1,244	1,268	1,236	1,239	1,258	1,290	1,285

Some data may be withheld due to non-disclosure restrictions, these data are shown as #NA.

Employment in Services, 1999-2009

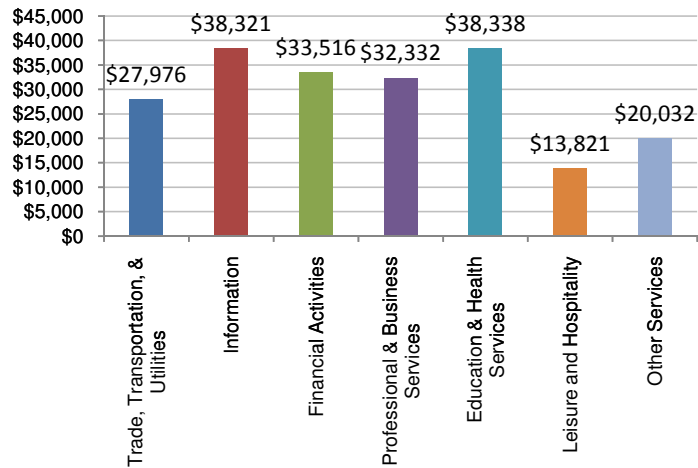


Douglas County, OR

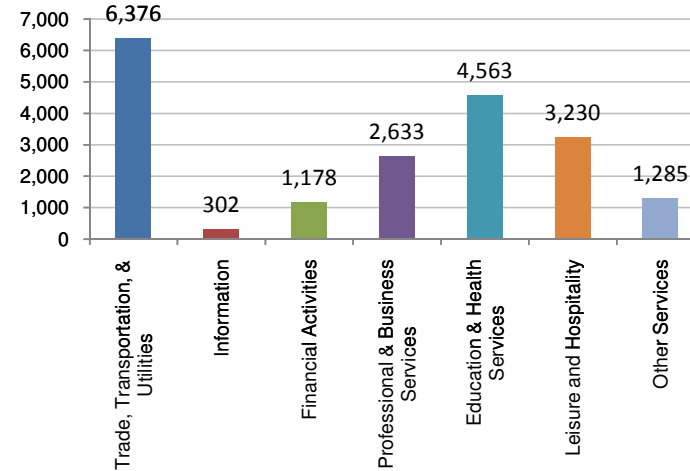
Average Annual Wages in Services	1999	2000	2001	2002	2003	2004	2005	2006	2007	2008	2009
Total Services	\$27,160	\$26,884	\$27,140	\$27,883	\$28,278	\$28,218	\$28,653	\$28,634	\$29,134	\$28,544	\$28,608
Trade, Transportation, & Utilities	\$26,403	\$25,997	\$25,770	\$26,237	\$26,867	\$27,464	\$27,922	\$28,220	\$28,347	\$27,774	\$27,976
Information	\$34,658	\$34,920	\$34,033	\$34,781	\$35,677	\$36,571	\$36,391	\$37,018	\$36,682	\$37,513	\$38,321
Financial Activities	\$30,993	\$30,753	\$32,959	\$32,047	\$34,939	\$32,956	\$33,004	\$32,670	\$33,923	\$33,292	\$33,516
Professional & Business Services	\$35,574	\$35,760	\$35,570	\$35,277	\$37,493	\$36,016	\$35,864	\$34,845	\$35,460	\$34,555	\$32,332
Education & Health Services	\$35,306	\$34,910	\$35,404	\$37,262	\$36,352	\$36,195	\$37,590	\$37,470	\$38,793	\$37,819	\$38,338
Leisure and Hospitality	\$15,595	\$15,376	\$13,070	\$13,207	\$13,140	\$13,489	\$13,479	\$13,659	\$13,669	\$13,488	\$13,821
Other Services	\$19,954	\$20,656	\$20,916	\$21,025	\$20,168	\$19,814	\$19,982	\$20,848	\$21,292	\$21,057	\$20,032

Some data may be withheld due to non-disclosure restrictions, these data are shown as #NA.

Average Annual Wages by Service Sector, 2009 (2009\$s)



Employment by Service Sector, 2009

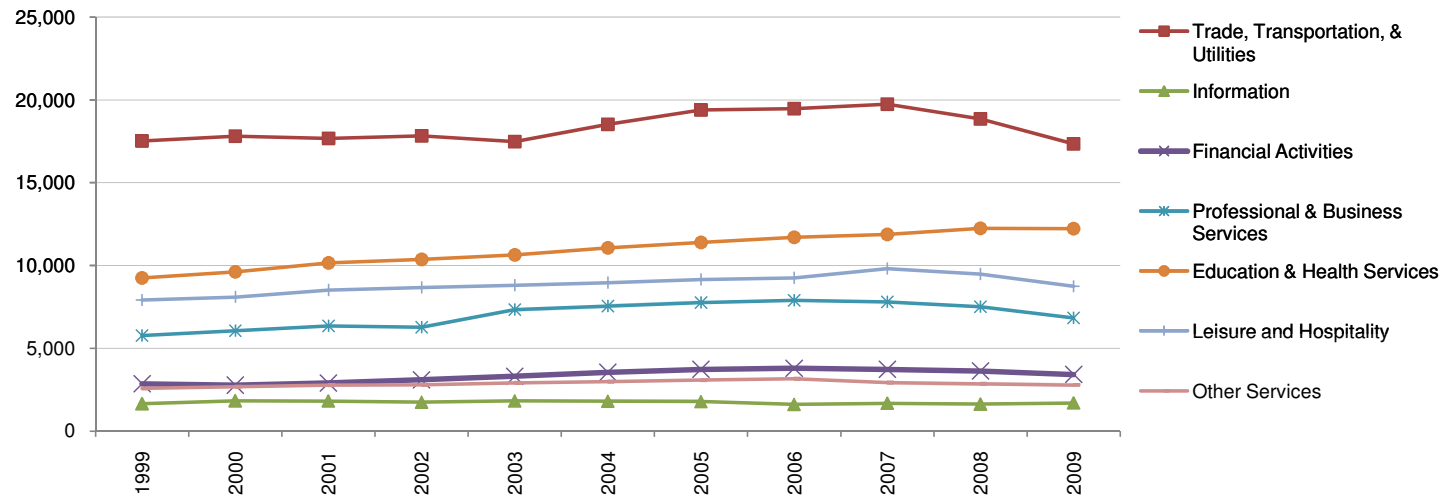


Jackson County, OR

Employment in Services	1999	2000	2001	2002	2003	2004	2005	2006	2007	2008	2009
Total Services	47,540	48,906	50,200	50,796	52,342	54,470	56,311	56,925	57,590	56,228	53,056
Trade, Transportation, & Utilities	17,522	17,807	17,672	17,826	17,479	18,533	19,390	19,476	19,739	18,854	17,342
Information	1,653	1,830	1,815	1,744	1,823	1,805	1,780	1,609	1,683	1,626	1,697
Financial Activities	2,854	2,776	2,907	3,097	3,315	3,548	3,725	3,792	3,727	3,635	3,420
Professional & Business Services	5,763	6,064	6,348	6,269	7,337	7,550	7,765	7,904	7,793	7,508	6,838
Education & Health Services	9,249	9,623	10,151	10,364	10,642	11,067	11,396	11,707	11,884	12,246	12,230
Leisure and Hospitality	7,906	8,099	8,512	8,675	8,801	8,966	9,159	9,257	9,809	9,481	8,737
Other Services	2,575	2,676	2,770	2,799	2,907	2,983	3,076	3,164	2,934	2,857	2,781

Some data may be withheld due to non-disclosure restrictions, these data are shown as #NA.

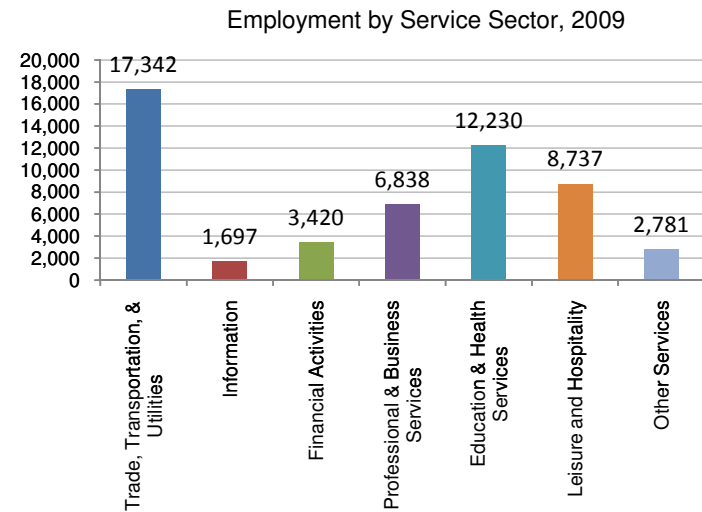
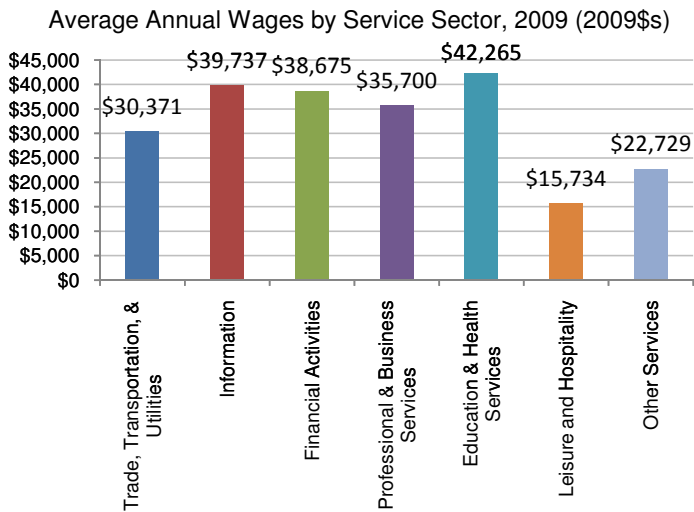
Employment in Services, 1999-2009



Jackson County, OR

Average Annual Wages in Services	1999	2000	2001	2002	2003	2004	2005	2006	2007	2008	2009
Total Services	\$29,868	\$29,643	\$29,689	\$30,581	\$30,940	\$31,501	\$31,396	\$31,598	\$31,936	\$31,094	\$31,823
Trade, Transportation, & Utilities	\$30,813	\$31,199	\$30,762	\$31,940	\$30,527	\$31,017	\$31,101	\$31,024	\$31,253	\$29,903	\$30,371
Information	\$43,020	\$36,238	\$36,482	\$38,652	\$40,560	\$41,622	\$41,732	\$41,940	\$43,969	\$41,656	\$39,737
Financial Activities	\$42,450	\$37,853	\$38,838	\$39,755	\$39,792	\$39,279	\$40,224	\$40,567	\$40,078	\$37,690	\$38,675
Professional & Business Services	\$30,410	\$30,800	\$31,409	\$31,333	\$35,538	\$35,951	\$34,640	\$35,037	\$36,110	\$35,078	\$35,700
Education & Health Services	\$36,474	\$36,863	\$37,319	\$38,683	\$39,349	\$40,562	\$40,515	\$41,221	\$41,649	\$41,251	\$42,265
Leisure and Hospitality	\$15,036	\$14,983	\$14,852	\$15,214	\$15,356	\$15,518	\$15,438	\$15,574	\$15,573	\$15,208	\$15,734
Other Services	\$21,709	\$22,110	\$22,475	\$22,724	\$22,203	\$22,289	\$22,003	\$21,868	\$23,499	\$23,257	\$22,729

Some data may be withheld due to non-disclosure restrictions, these data are shown as #NA.

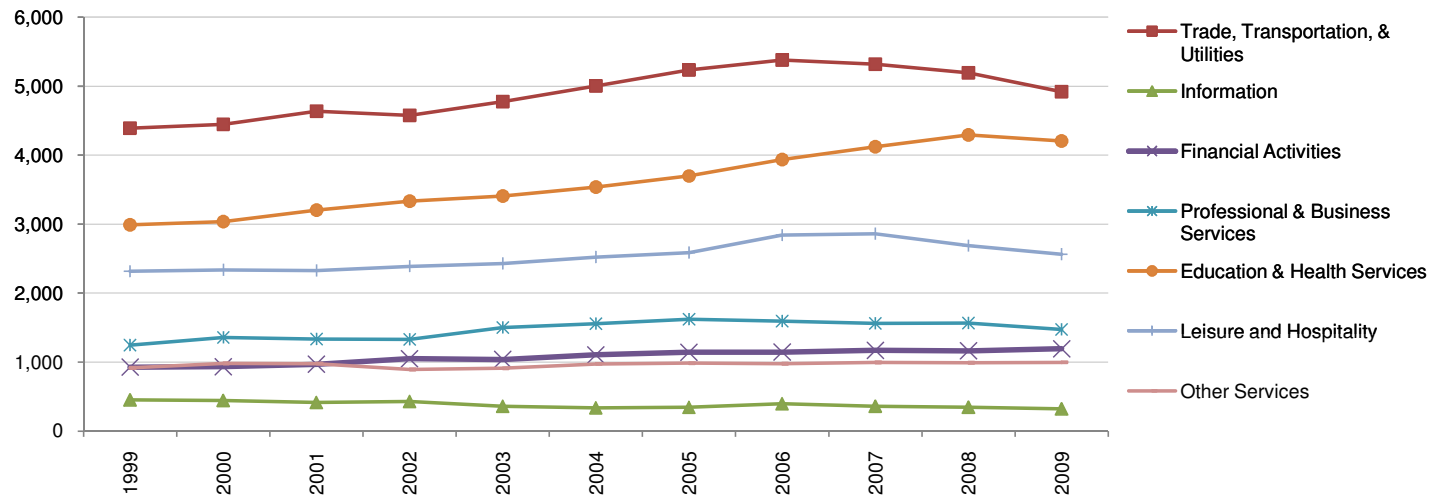


Josephine County, OR

Employment in Services	1999	2000	2001	2002	2003	2004	2005	2006	2007	2008	2009
Total Services	13,238	13,533	13,860	14,003	14,423	15,042	15,616	16,274	16,391	16,240	15,675
Trade, Transportation, & Utilities	4,389	4,444	4,634	4,574	4,775	5,004	5,236	5,377	5,317	5,192	4,918
Information	453	445	415	430	360	339	345	397	361	346	323
Financial Activities	926	933	969	1,050	1,038	1,105	1,142	1,144	1,170	1,164	1,194
Professional & Business Services	1,244	1,355	1,332	1,330	1,500	1,558	1,620	1,595	1,561	1,566	1,471
Education & Health Services	2,991	3,036	3,201	3,332	3,405	3,537	3,697	3,937	4,121	4,292	4,205
Leisure and Hospitality	2,315	2,335	2,326	2,389	2,429	2,523	2,587	2,839	2,858	2,686	2,562
Other Services	916	982	979	893	910	974	984	977	995	991	997

Some data may be withheld due to non-disclosure restrictions, these data are shown as #NA.

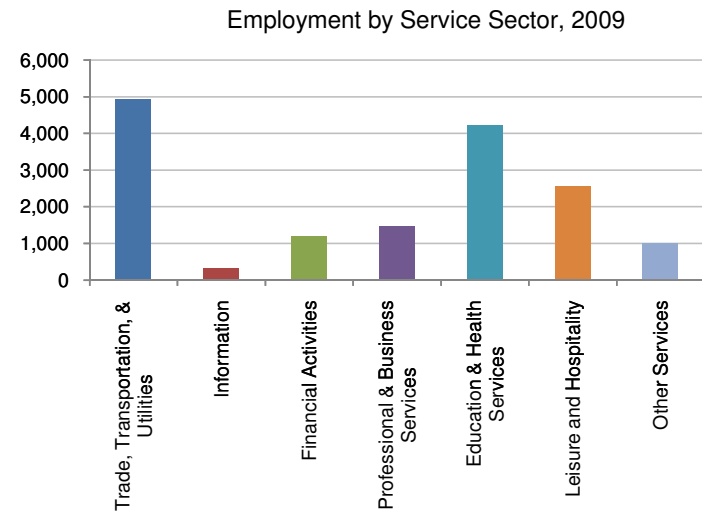
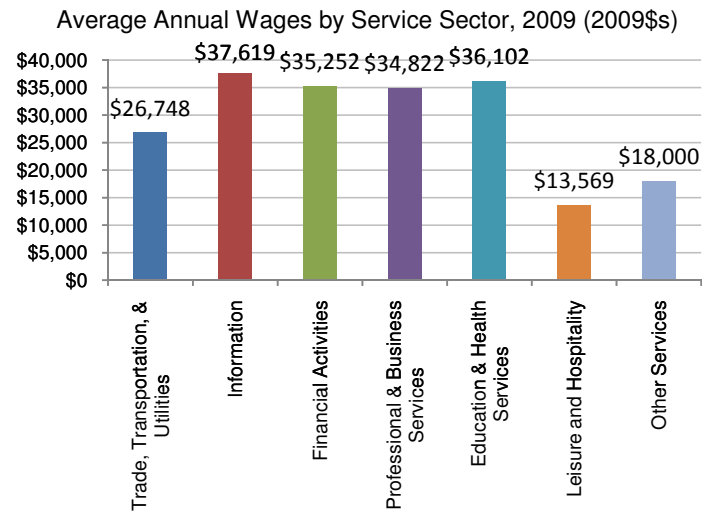
Employment in Services, 1999-2009



Josephine County, OR

Average Annual Wages in Services	1999	2000	2001	2002	2003	2004	2005	2006	2007	2008	2009
Total Services	\$25,886	\$25,885	\$25,669	\$26,584	\$26,847	\$27,574	\$27,772	\$27,907	\$27,933	\$27,277	\$28,193
Trade, Transportation, & Utilities	\$27,001	\$26,295	\$26,074	\$27,106	\$26,963	\$27,462	\$27,464	\$27,515	\$27,509	\$26,210	\$26,748
Information	\$39,513	\$40,753	\$39,648	\$40,219	\$38,891	\$40,639	\$40,530	\$41,857	\$38,011	\$38,032	\$37,619
Financial Activities	\$29,793	\$31,303	\$31,713	\$33,640	\$35,717	\$36,381	\$37,179	\$36,671	\$36,660	\$35,119	\$35,252
Professional & Business Services	\$30,607	\$29,803	\$29,979	\$31,123	\$31,115	\$33,270	\$31,527	\$31,439	\$33,564	\$34,463	\$34,822
Education & Health Services	\$31,019	\$31,323	\$30,858	\$32,000	\$32,791	\$33,885	\$34,852	\$35,443	\$35,048	\$33,814	\$36,102
Leisure and Hospitality	\$13,141	\$13,194	\$12,898	\$13,098	\$13,393	\$13,492	\$13,754	\$13,842	\$13,524	\$13,224	\$13,569
Other Services	\$18,860	\$20,017	\$19,370	\$18,162	\$18,039	\$18,092	\$18,143	\$18,807	\$19,254	\$18,173	\$18,000

Some data may be withheld due to non-disclosure restrictions, these data are shown as #NA.

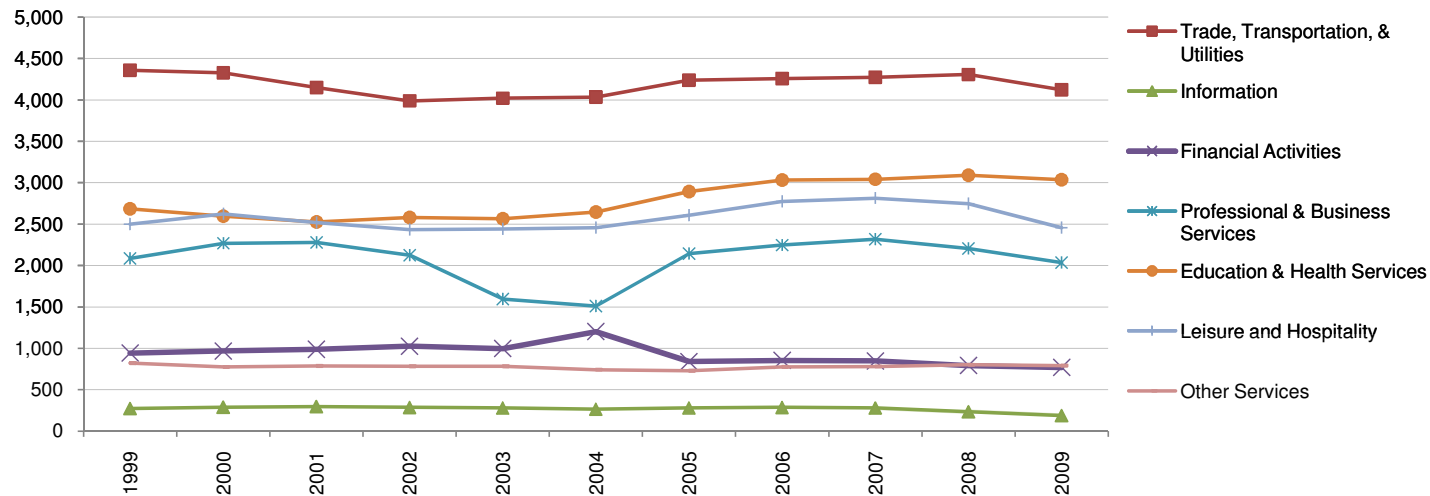


Klamath County, OR

Employment in Services	1999	2000	2001	2002	2003	2004	2005	2006	2007	2008	2009
Total Services	13,692	13,951	13,563	13,238	12,709	12,859	13,740	14,232	14,363	14,176	13,405
Trade, Transportation, & Utilities	4,358	4,326	4,150	3,989	4,020	4,033	4,240	4,259	4,273	4,306	4,122
Information	274	290	298	287	281	266	282	287	280	235	189
Financial Activities	942	968	988	1,026	997	1,201	840	854	847	792	769
Professional & Business Services	2,085	2,269	2,280	2,125	1,594	1,511	2,143	2,246	2,317	2,205	2,036
Education & Health Services	2,685	2,595	2,527	2,581	2,565	2,647	2,894	3,032	3,042	3,089	3,036
Leisure and Hospitality	2,500	2,624	2,519	2,435	2,440	2,458	2,608	2,774	2,814	2,746	2,455
Other Services	822	774	786	783	782	742	728	776	781	801	791

Some data may be withheld due to non-disclosure restrictions, these data are shown as #NA.

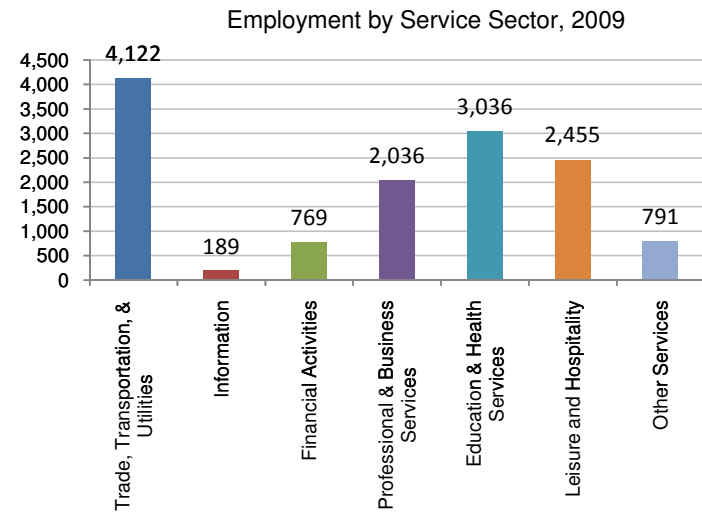
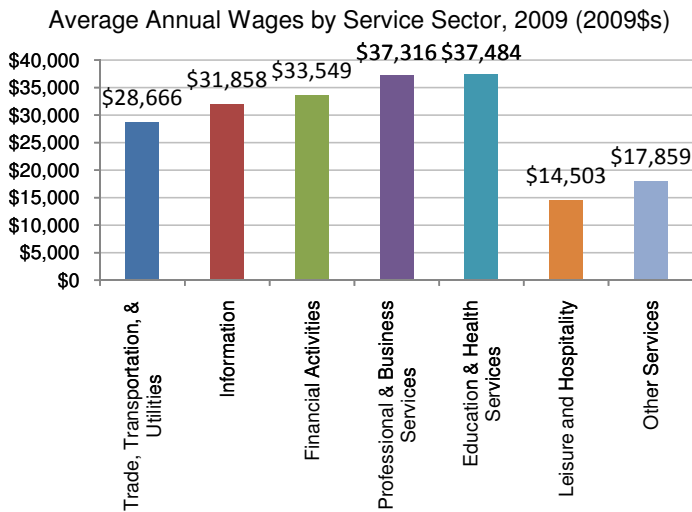
Employment in Services, 1999-2009



Klamath County, OR

Average Annual Wages in Services	1999	2000	2001	2002	2003	2004	2005	2006	2007	2008	2009
Total Services	\$27,014	\$26,786	\$27,050	\$29,018	\$29,908	\$29,687	\$29,308	\$29,533	\$29,555	\$29,107	\$29,069
Trade, Transportation, & Utilities	\$29,399	\$28,759	\$28,251	\$28,713	\$28,849	\$30,036	\$29,672	\$29,772	\$29,347	\$28,624	\$28,666
Information	\$29,532	\$32,424	\$34,612	\$33,775	\$32,551	\$32,302	\$31,035	\$32,016	\$31,649	\$32,009	\$31,858
Financial Activities	\$32,022	\$31,417	\$33,514	\$34,393	\$42,210	\$27,913	\$32,214	\$33,618	\$34,361	\$34,118	\$33,549
Professional & Business Services	\$26,844	\$25,771	\$29,211	\$38,157	\$40,108	\$42,967	\$37,393	\$38,757	\$38,254	\$37,960	\$37,316
Education & Health Services	\$35,093	\$36,210	\$35,432	\$36,233	\$37,252	\$38,601	\$37,318	\$37,199	\$38,214	\$37,853	\$37,484
Leisure and Hospitality	\$14,797	\$14,724	\$13,931	\$14,490	\$15,703	\$15,274	\$15,085	\$14,920	\$14,585	\$14,366	\$14,503
Other Services	\$18,922	\$19,316	\$18,551	\$18,489	\$18,542	\$18,642	\$18,501	\$18,434	\$19,233	\$18,244	\$17,859

Some data may be withheld due to non-disclosure restrictions, these data are shown as #NA.



About this Appendix

This appendix is a supplement to the report: *The Siskiyou Region: Demographic, Economic and Fiscal Fundamentals*.

Data are from: U.S. Department of Labor. 2010. Bureau of Labor Statistics, Quarterly Census of Employment and Wages, Washington, D.C. The Bureau of Labor Statistics does not report data for proprietors or the value of benefits.

Headwaters Economics is an independent, nonprofit research group whose mission is to improve community development and land management decisions in the West.

For more information about Headwaters Economics, see: www.headwaterseconomics.org.

For questions about this appendix, contact: Ben Alexander, 406-599-7423, ben@headwaterseconomics.org.

